




 **Primary 5 Science (Term 2) - RGS** 

Add Questions **Assign** **Settings** **Review**

 Duplicate  Print  Delete

 **Assign Test**

Test Introduction

[+ Add Introduction](#)

64 Questions (69 Points)

Question Bank: 9,275 Questions 

Test Questions **0 Test Assignments**

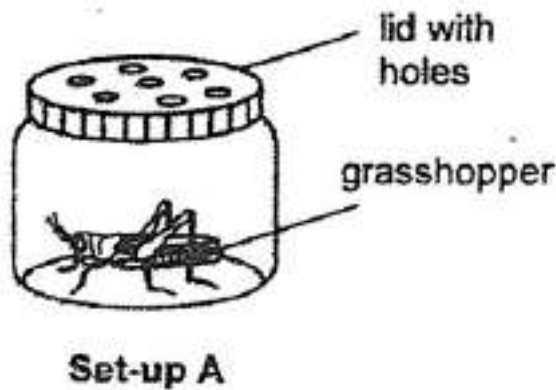
Question 1 Primary 5 Science » Primary 5 Science (Term 2) 2 pts

For each question, four options are given. One of them is the correct answer, make your choice (A, B, C or D) and choose the correct answer. (28 x 2 marks)

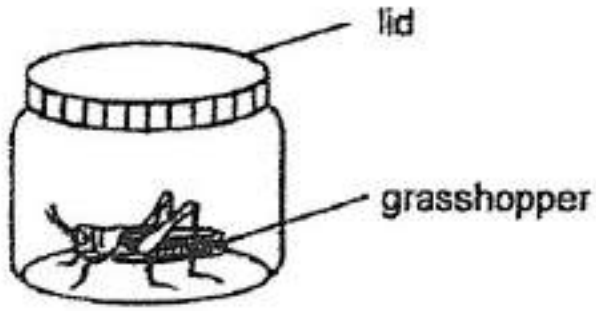
Roy caught a grasshopper and wanted to keep it. He prepared four set-ups, A, B, C and D, to try to keep it.

Which one of the set-ups, A, B, C or D, should he use to keep the grasshopper alive for the longest time?

A)

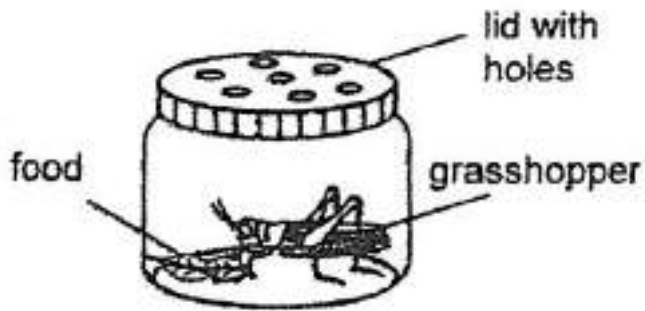


B)



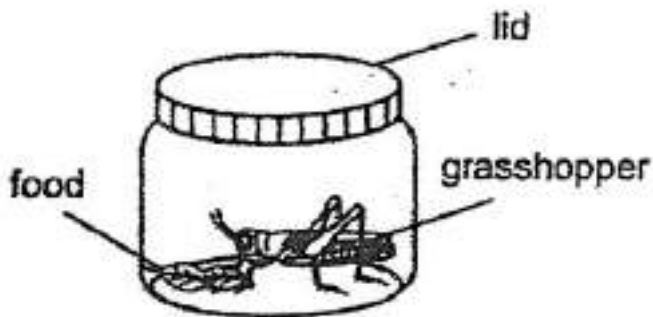
Set-up B

✓ c)



Set-up C

D)



Set-up D

Question Type: Multiple Choice
Randomize Answers: No
Date Added: Thu 5th Aug 2021
Last Modified: N/A
QID#: 28,628,466

[Answers](#) | [Edit](#) | [Duplicate](#) | [Used In](#) | [Reorder](#)

[Remove From Test](#)

Question 2

Primary 5 Science » Primary 5 Science (Term 2)

2 pts

The table below shows the characteristics of animals W, X, Y and Z.

Animal	Has outer covering of hair	Lays eggs	Has wings	Has 3 body parts
W		✓		✓
X	✓	✓		
Y	✓		✓	
Z		✓	✓	✓

Based on the table above, which of the following statement(s) is/are possibly true?

- A) Animal W is an insect.
- B) Only animal X is a mammal.
- C) Both animals Y and Z are birds.
- D) Animal W is an insect but animal Y is a mammal.

- A) B only
- ✓ B) A and D only
- C) B and C only
- D) A, B and C only

Question Type: Multiple Choice
Randomize Answers: No
Date Added: Thu 5th Aug 2021
Last Modified: N/A
QID#: 28,628,441

[Answers](#) | [Edit](#) | [Duplicate](#) | [Used In](#) | [Reorder](#)

[Remove From Test](#)

Question 3

Primary 5 Science » Primary 5 Science (Term 2)

2 pts

Which one of the following parts of a cell supports and protects the cell?

- A) nucleus
- ✓ B) cell wall
- C) cytoplasm
- D) cell membrane

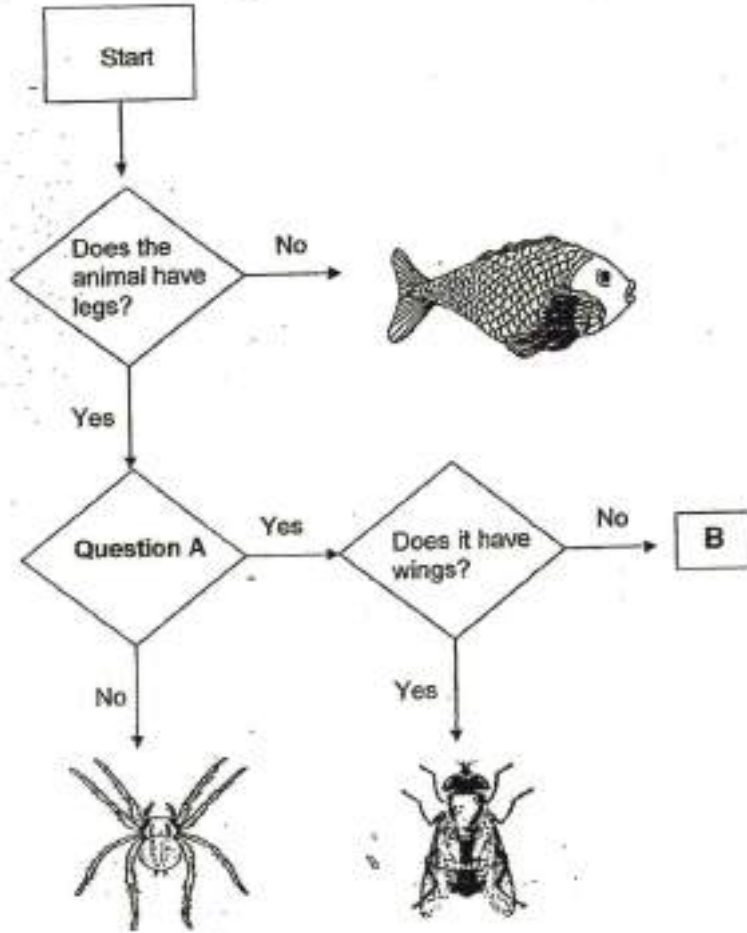
Question Type: Multiple Choice
Randomize Answers: No
Date Added: Thu 5th Aug 2021
Last Modified: N/A
QID#: 28,628,442

Question 4

Primary 5 Science » Primary 5 Science (Term 2)


2 pts


Study the flow chart below.





Which one of the following is correct?

- A)

Question A	B
Does it have 6 legs?	
- B)

Does it have 2 body parts?	
----------------------------	---
- C)

Does it have 2 body parts?	
----------------------------	---
- ✓ D)

Does it have 6 legs?	
----------------------	---

Question Type: Multiple Choice
Randomize Answers: No
Date Added: Thu 5th Aug 2021
Last Modified: N/A
QID#: 28,628,443

[Answers](#) | [Edit](#) | [Duplicate](#) | [Used In](#) | [Reorder](#)

[Remove From Test](#)

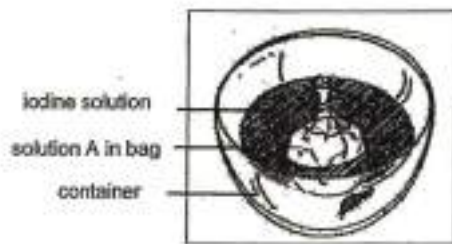
Question 5

Primary 5 Science » Primary 5 Science (Term 2)

2 pts

Ali placed solution A into a plastic bag and fastened it securely. He placed the bag into a container of iodine solution as shown in the diagram below.

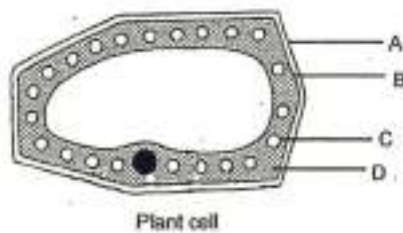
Iodine solution is a yellowish-brown solution which will turn blue-black when it interacts with starch.



He recorded his observations in the table below.

	At the start of the experiment	At the end of the experiment
Colour of Solution A in plastic bag	white	blue-black
Colour of iodine solution in container	yellowish-brown	yellowish-brown

Which one of the following parts of a plant cell has the same function as the bag?



- A) A
 ✓ B) B
 C) C
 D) D

Question Type: Multiple Choice
Randomize Answers: No
Date Added: Thu 5th Aug 2021
Last Modified: N/A
QID#: 28,628,444

[Answers](#) | [Edit](#) | [Duplicate](#) | [Used In](#) | [Reorder](#)

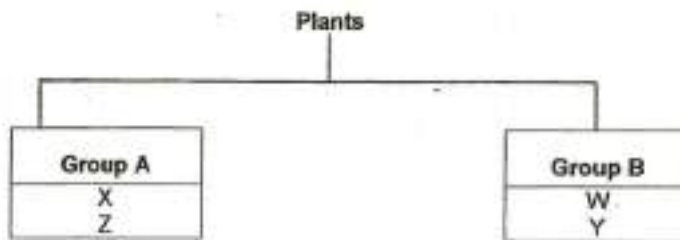
[Remove From Test](#)

Question 6

Plants W, X, Y and Z have common characteristics as shown in the table below.
A tick (✓) in the box indicates the presence of such a characteristic.

Characteristic \ Plant	W	X	Y	Z
Produces flowers	✓		✓	
Bear edible fruits	✓			
Reproduces by spores		✓		✓

Using the information above, John grouped the plants in the classification table below.



What are the suitable sub-headings for Group A and Group B?

- A)

Group A	Group B
moss	ferns
- B)

Group A	Group B
bears fruit	does not bear fruit
- C)

Group A	Group B
bears edible fruits	bears inedible fruits
- ✓ D)

Group A	Group B
non-flowering plants	flowering plants





Question Type: Multiple Choice
Randomize Answers: No
Date Added: Thu 5th Aug 2021
Last Modified: N/A
QID#: 28,628,445

[Answers](#) | [Edit](#) | [Duplicate](#) | [Used In](#) | [Reorder](#)

[Remove From Test](#)

Question 7

Six objects are classified into two groups as shown below.

Group 1	Group 2
 T-shirt	 safety pin
 Log	 marble
 paper bag	 plastic cup

The objects are grouped according to whether they are _____

- A) flexible
- ✓ B) waterproof
- C) transparent
- D) able to float in water

Question Type: Multiple Choice
Randomize Answers: No
Date Added: Thu 5th Aug 2021
Last Modified: N/A
QID#: 28,628,446

[Answers](#) | [Edit](#) | [Duplicate](#) | [Used In](#) | [Reorder](#)

[Remove From Test](#)

Question 8

Primary 5 Science » Primary 5 Science (Term 2)

2 pts

Which one of the following statements is true about micro-organisms?

- A) Micro-organisms are not living things.
- ✓ B) Some micro-organisms are useful to us.
- C) All micro-organisms can make their own food.
- D) Micro-organisms can only grow in an environment with a temperature of more than 25°C.

Question Type: Multiple Choice
Randomize Answers: No
Date Added: Thu 5th Aug 2021
Last Modified: N/A
QID#: 28,628,447

[Answers](#) | [Edit](#) | [Duplicate](#) | [Used In](#) | [Reorder](#)

[Remove From Test](#)

Question 9

Primary 5 Science » Primary 5 Science (Term 2)

2 pts

The diagram below shows part X of a helicopter.



Study the properties of the following materials shown below.

Material	Property of material			
	Flexible	Waterproof	Strong	Floats on water
A	✓	✓	✓	
B		✓	✓	
C	✓	✓		✓
D		✓		✓

Which material is most suitable for making part X of the helicopter?

- A) A
- ✓ B) B
- C) C
- D) D

Question Type: Multiple Choice
Randomize Answers: No
Date Added: Thu 5th Aug 2021
Last Modified: N/A
QID#: 28,628,448

[Answers](#) | [Edit](#) | [Duplicate](#) | [Used In](#) | [Reorder](#)

[Remove From Test](#)

Question 10

Primary 5 Science » Primary 5 Science (Term 2)

2 pts

Which one of the following statements is true about life cycles?

- A) All animals have three-staged life cycles.
- B) A life cycle of an animal begins with an egg.
- ✓ C) The young of an organism inherits characteristics from its parent.
- D) The life cycle of a young of an organism is different from its parents.

Question Type: Multiple Choice
Randomize Answers: No
Date Added: Thu 5th Aug 2021
Last Modified: N/A
QID#: 28,628,449

[Answers](#) |
 [Edit](#) |
 [Duplicate](#) |
 [Used In](#) |
 [Reorder](#)

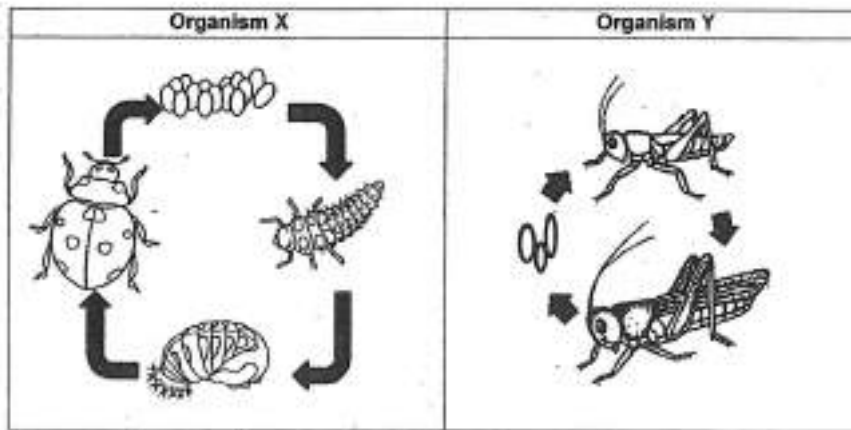
[Remove From Test](#)

Question 11

Primary 5 Science » Primary 5 Science (Term 2)

2 pts

The diagram below shows the life cycle of organisms X and Y.



Based on the information in the diagrams above, which of the following statement(s) is/are true?

- A) The adults of organisms X and Y live on land.
 - B) Organisms X and Y give birth to their young alive.
 - C) The young of organism X does not look like its parent.
 - D) Organisms X and Y go through the same stages in their life cycles.
- ✓ A) C only
 - B) A and D only
 - C) B and D only
 - D) A, B and C only

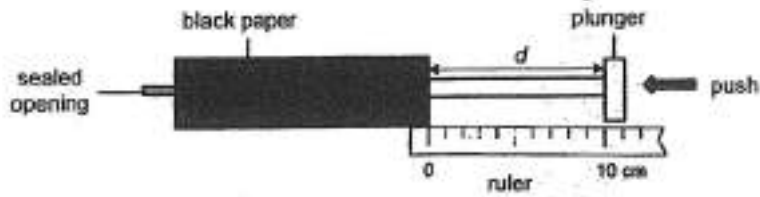
Question Type: Multiple Choice
Randomize Answers: No
Date Added: Thu 5th Aug 2021
Last Modified: N/A
QID#: 28,628,450

[Answers](#) |
 [Edit](#) |
 [Duplicate](#) |
 [Used In](#) |
 [Reorder](#)

[Remove From Test](#)

Question 12

Eileen used two identical syringes and filled them up completely with substances X and Y respectively. Each syringe was covered with black paper as shown in the diagram below.



She pushed the plunger as hard as she could. She then recorded the distance, d , in the table as shown below.

Syringe filled with Substance	Distance, d (cm)	
	Before	After
X	10	4
Y	10	10

Which one of the following represents the states of matter of substances X and Y?

- A)

X	Y
Liquid	Solid
- B)

X	Y
Liquid	Gas
- C)

X	Y
Solid	Gas
- ✓ D)

X	Y
Gas	Liquid

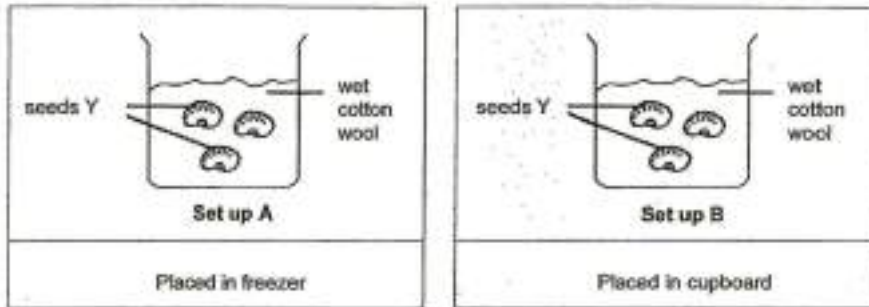
Question Type: Multiple Choice
Randomize Answers: No
Date Added: Thu 5th Aug 2021
Last Modified: N/A
QID#: 28,628,451

[Answers](#) | [Edit](#) | [Duplicate](#) | [Used In](#) | [Reorder](#)

[Remove From Test](#)

Question 13

Chris prepared set-ups A and B using similar seeds Y and placed them in different locations as shown below.



Based on the information above, which of the following statement(s) is/are likely to be correct?

- A Seeds in set-up A will germinate because there is water.
- B Seeds in set-up A will not germinate as there is no warmth.
- C Seeds in set-up B will not germinate as there is no sunlight.
- D Seeds in set-up B will germinate as there is water, oxygen and warmth.

- A) A only
- B) D only
- C) A and C only
- ✓ D) B and D only

Question Type: Multiple Choice
Randomize Answers: No
Date Added: Thu 5th Aug 2021
Last Modified: N/A
QID#: 28,628,452

[Answers](#) | [Edit](#) | [Duplicate](#) | [Used In](#) | [Reorder](#)

[Remove From Test](#)

Question 14

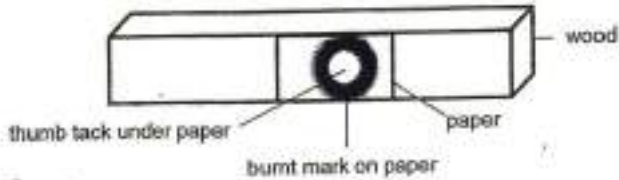
Primary 5 Science » Primary 5 Science (Term 2)

2 pts

The diagram below shows a thumb tack.



Stan nailed thumb tack X to the wood as shown in the diagram below. He wrapped paper over the thumb tack. Then, he placed a candle flame near the thumb tack and recorded the time taken for the burnt mark to first appear on the paper. He repeated the experiment with similar thumb tacks, Y and Z, made of different materials.



Stan recorded his results in the table below.

Material	Time taken for the burnt mark to first appear (seconds)
X	29
Y	12
Z	20

Based on the information above, which of the following correctly shows the 3 materials arranged from the best to the poorest conductor of heat?

- A)

Best conductor of heat	Poorest conductor of heat
X	Y Z
- ✓ B)

Best conductor of heat	Poorest conductor of heat
X	Z Y
- C)

Best conductor of heat	Poorest conductor of heat
Y	X Z
- D)

Best conductor of heat	Poorest conductor of heat
Z	X Y

Question Type: Multiple Choice
 Randomize Answers: No
 Date Added: Thu 5th Aug 2021
 Last Modified: N/A
 QID#: 28,628,453

[Answers](#) |
 [Edit](#) |
 [Duplicate](#) |
 [Used In](#) |
 [Reorder](#)

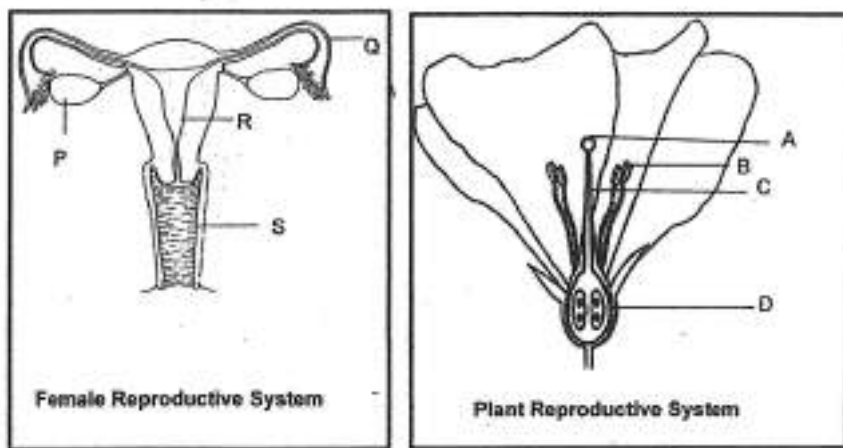
[Remove From Test](#)

Question 15

Primary 5 Science » Primary 5 Science (Term 2)

2 pts

The diagrams below show the reproductive system of a human and a plant respectively.



Which of the following represents the part where the fertilized egg will develop?

- A)

Female Reproductive System	Plant Reproductive System
P	A
- B)

Female Reproductive System	Plant Reproductive System
P	B
- C)

Female Reproductive System	Plant Reproductive System
Q	D
- ✓ D)

Female Reproductive System	Plant Reproductive System
R	D

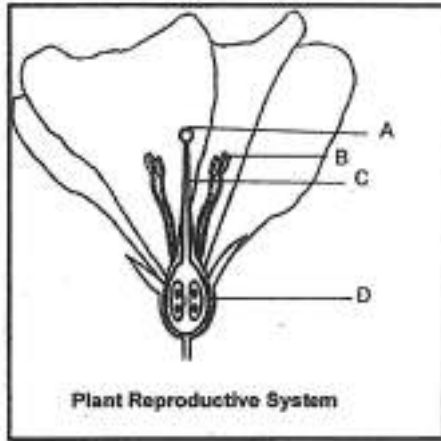
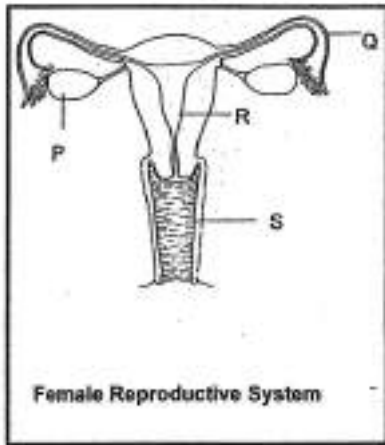
Question Type: Multiple Choice
 Randomize Answers: No
 Date Added: Thu 5th Aug 2021
 Last Modified: N/A
 QID#: 28,628,454

[Answers](#) |
 [Edit](#) |
 [Duplicate](#) |
 [Used In](#) |
 [Reorder](#)
[Remove From Test](#)

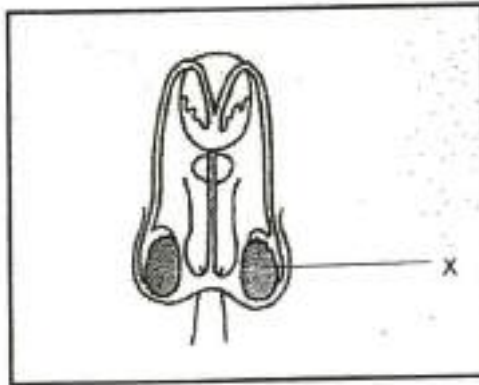
Question 16

Primary 5 Science » Primary 5 Science (Term 2) 2 pts

The diagrams below show the reproductive system of a human and a plant respectively.



Which one of the following parts in the plant reproductive system has the same function as part X in the male reproductive system?



Male Reproductive System

- A) A
- ✓ B) B
- C) C
- D) D

Question Type: Multiple Choice
 Randomize Answers: No
 Date Added: Thu 5th Aug 2021
 Last Modified: N/A
 QID#: 28,628,455

[Answers](#) | [Edit](#) | [Duplicate](#) | [Used In](#) | [Reorder](#)

[Remove From Test](#)

Question 17

Primary 5 Science » Primary 5 Science (Term 2)

2 pts

Sally prepared two set-ups, A and B. The air inside the container was 28°C. She hung identical slice of meat in each container. Then she placed some hot stones which were heated to 200°C and placed them inside each air-tight container as shown below.



Which of the following observation and corresponding explanation is most likely correct?

- A)

Observation	Explanation
The temperature of air in both containers would rise to the same temperature.	The air in each container gained the same amount of heat from the hot stones.

- B)

Observation	Explanation
Slice of meat in set-up A cooked faster.	The meat gained more heat from the hot stones as it is closer to the hot stones.

- ✓ C)

Observation	Explanation
Slice of meat in set-up B cooked slower.	The meat gained less heat as there was lesser mass of hot stones.

- D)

Observation	Explanation
Both slices of meat will be cooked at the same rate.	Both slices of meat gained the same amount of heat as the hot stones in each containers are of the same temperature.

Question Type: Multiple Choice
Randomize Answers: No
Date Added: Thu 5th Aug 2021
Last Modified: N/A
QID#: 28,628,456

[Answers](#) | [Edit](#) | [Duplicate](#) | [Used In](#) | [Reorder](#)

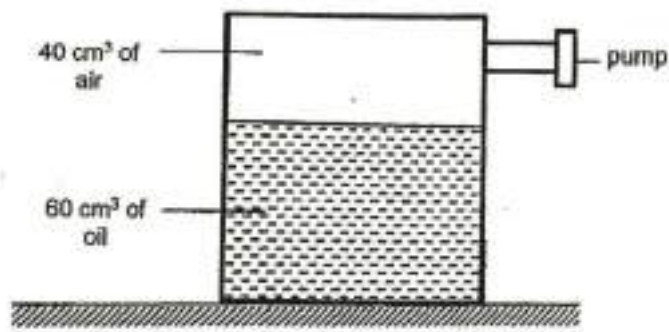
[Remove From Test](#)

Question 18

Primary 5 Science » Primary 5 Science (Term 2)

2 pts

A sealed container holds 60cm^3 of oil and 40cm^3 of air as shown below. Another 10cm^3 of oil and 20cm^3 of air is added to the container through the pump.



What is the final volume of oil and air in the container?

- A)

Volume of oil (cm^3)	Volume of air (cm^3)
70	60
- B)

Volume of oil (cm^3)	Volume of air (cm^3)
60	40
- C)

Volume of oil (cm^3)	Volume of air (cm^3)
70	40
- ✓ D)

Volume of oil (cm^3)	Volume of air (cm^3)
70	30

Question Type: Multiple Choice
Randomize Answers: No
Date Added: Thu 5th Aug 2021
Last Modified: N/A
QID#: 28,628,457

[Answers](#) | [Edit](#) | [Duplicate](#) | [Used In](#) | [Reorder](#)

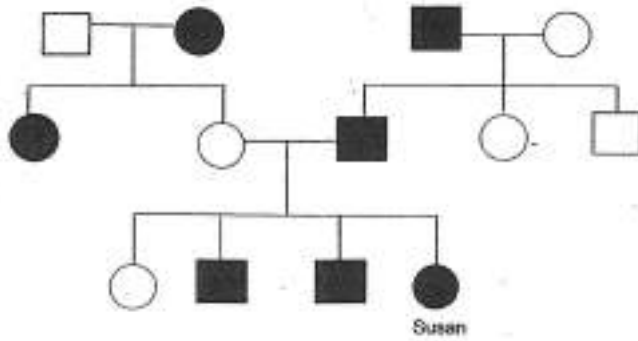
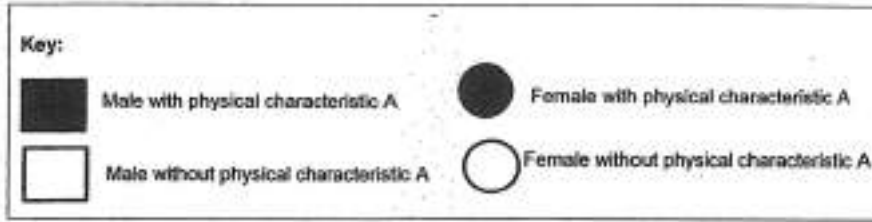
[Remove From Test](#)

Question 19

Primary 5 Science » Primary 5 Science (Term 2)

2 pts

Study the family tree of Susan below. The family tree shows the members of the family who display physical characteristic A.



Based on the information above, which one of the following statements about the family tree is true?

- A) All of Susan's siblings have characteristic A.
- B) Susan's uncle has physical characteristic A.
- C) Susan's aunts do not have physical characteristic A.
- ✓ D) Susan inherited physical characteristic A from her father.

Question Type: Multiple Choice
Randomize Answers: No
Date Added: Thu 5th Aug 2021
Last Modified: N/A
QID#: 28,628,458

[Answers](#) | [Edit](#) | [Duplicate](#) | [Used In](#) | [Reorder](#)

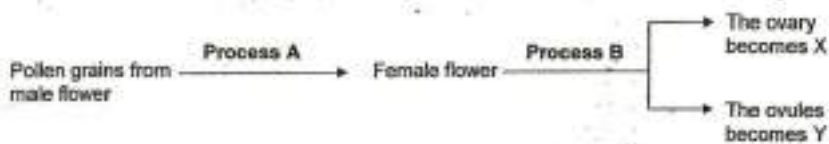
[Remove From Test](#)

Question 20

Primary 5 Science » Primary 5 Science (Term 2)

2 pts

Study the diagram below.



Which of the following correctly identifies A, B, X and Y?

- A)

A	B	X	Y
fertilisation	pollination	fruit	seed
- B)

A	B	X	Y
fertilisation	pollination	seed	fruit

✓ C)

A	B	X	Y
pollination	fertilisation	fruit	seed

D)

A	B	X	Y
pollination	fertilisation	seed	fruit

Question Type: Multiple Choice
Randomize Answers: No
Date Added: Thu 5th Aug 2021
Last Modified: N/A
QID#: 28,628,459

[Answers](#) | [Edit](#) | [Duplicate](#) | [Used In](#) | [Reorder](#)

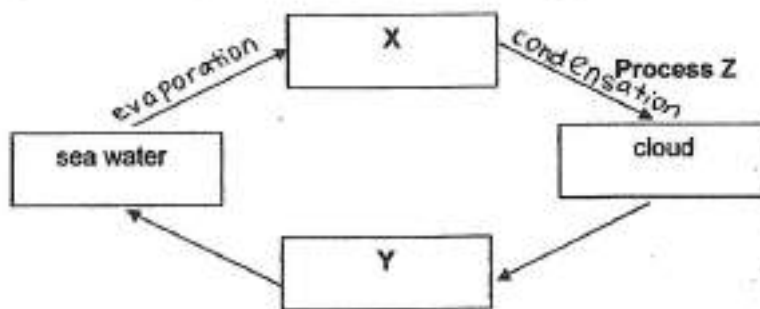
[Remove From Test](#)

Question 21

Primary 5 Science » Primary 5 Science (Term 2)

2 pts

The diagram below shows the water cycle.



Which one of the following is correct?

A)

X	Y	Process Z
water vapour	rain	evaporation

B)

X	Y	Process Z
rain	water vapour	condensation

C)

X	Y	Process Z
rain	water vapour	evaporation

✓ D)

X	Y	Process Z
water vapour	rain	condensation

Question Type: Multiple Choice
Randomize Answers: No
Date Added: Thu 5th Aug 2021
Last Modified: N/A

QID#:

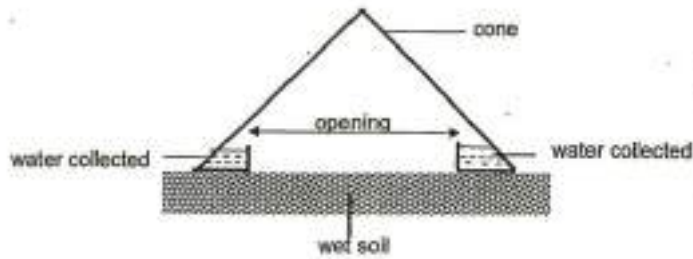
28,628,460

[Answers](#) | [Edit](#) | [Duplicate](#) | [Used In](#) | [Reorder](#)
[Remove From Test](#)**Question 22**

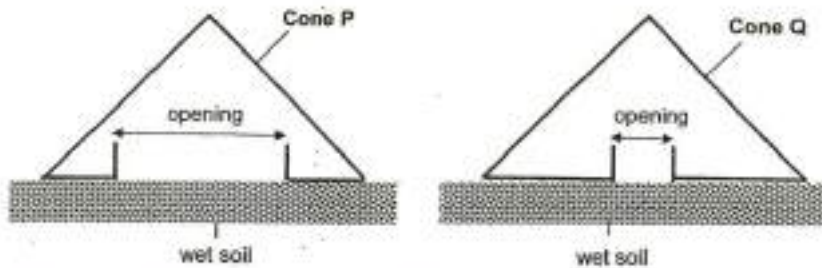
Primary 5 Science » Primary 5 Science (Term 2)

2 pts

Hannah had a plastic cone that was used to collect water from the environment. The diagram below shows how the cone works.



On a hot day, Hannah placed two such cones, P and Q, on wet soil. Cones P and Q were similar but P had a larger opening at the base than Q. Hannah left the cones overnight and collected the water the following morning.



Based on the information above, which of the following statement(s) is/are likely to be true?

- A The air inside both cones lost heat and condensed.
- B The water vapour outside the cones condensed and collected in the cones.
- C There was more water vapour inside cone P which lost heat and condensed.
- D There was a smaller exposed surface area of water inside cone Q hence less water lost heat and condensed.

- ✓ A) C only
- B) A and C only
- C) B and D only
- D) A and D only

Question Type: Multiple Choice
Randomize Answers: No
Date Added: Thu 5th Aug 2021
Last Modified: N/A
QID#: 28,628,461

[Answers](#) | [Edit](#) | [Duplicate](#) | [Used In](#) | [Reorder](#)
[Remove From Test](#)**Question 23**

Primary 5 Science » Primary 5 Science (Term 2)

2 pts

Substance X is a solid at 40°C and a liquid at 300°C.
Which one of the following shows the possible melting and boiling point of X?

A)

Melting point of X (°C)	Boiling point of X (°C)
25	170

B)

Melting point of X (°C)	Boiling point of X (°C)
30	400

C)

Melting point of X (°C)	Boiling point of X (°C)
50	250

✓ D)

Melting point of X (°C)	Boiling point of X (°C)
65	310

Question Type: Multiple Choice
Randomize Answers: No
Date Added: Thu 5th Aug 2021
Last Modified: N/A
QID#: 28,628,462

[Answers](#) |
 [Edit](#) |
 [Duplicate](#) |
 [Used In](#) |
 [Reorder](#)

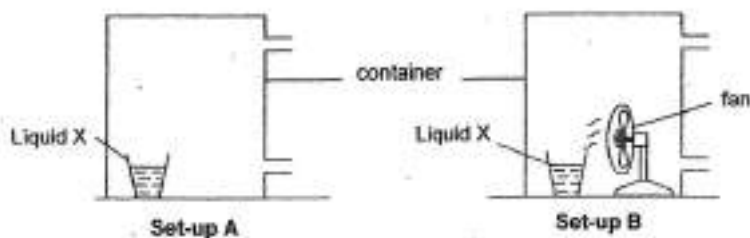
[Remove From Test](#)

Question 24

Primary 5 Science » Primary 5 Science (Term 2)

2 pts

Alvin carried out the experiment as shown below. 50 ml of Liquid X at 30°C was placed in the same room.



After five hours, Alvin compared the amount of liquid left in each glass. He observed that the two liquids were less than before.

Which of the following explain(s) his observations after five hours?

- A There was more water vapour in set-up B so liquid X evaporated faster.
- B There was lesser amount of liquid X left in set-up B than A as it evaporated faster due to the presence of wind from the fan.
- C There was less amount of liquid X left in set-up A than B as it gained more heat from the higher surrounding temperature and evaporated faster.

- A) A only
- ✓ B) B only
- C) A and B only
- D) A, B and C

Question Type: Multiple Choice
 Randomize Answers: No
 Date Added: Thu 5th Aug 2021
 Last Modified: N/A
 QID#: 28,628,463

Answers | Edit | Duplicate | Used In | Reorder

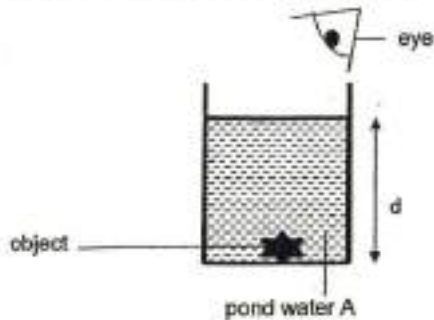
Remove From Test

Question 25

Primary 5 Science » Primary 5 Science (Term 2)

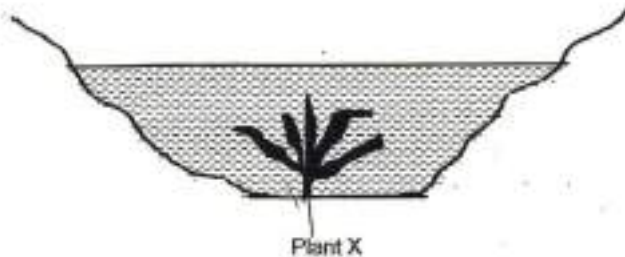
2 pts

Dotty collected water from four ponds A, B, C and D. She put an object into a beaker. Then she poured water from pond A slowly into the beaker until she could not see the object and recorded the water level, d , in the result table shown. She repeated the experiment with pond water B, C and D respectively.



Pond water	Water level, d (cm)
A	24
B	5
C	16
D	42

Plant X grows at the bottom of the pond. It requires plenty of sunlight in order to grow well.



Based on the information above, in which pond would plant X most likely grow best in?

- A) A
- B) B
- C) C

✓ D) D

Question Type: Multiple Choice
Randomize Answers: No
Date Added: Thu 5th Aug 2021
Last Modified: N/A
QID#: 28,628,464

[Answers](#) |
 [Edit](#) |
 [Duplicate](#) |
 [Used In](#) |
 [Reorder](#)

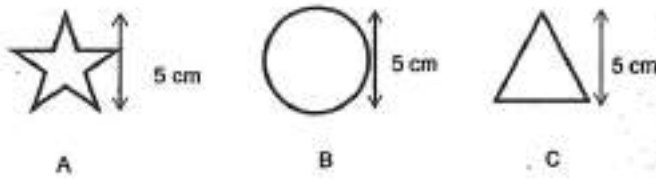
[Remove From Test](#)

Question 26

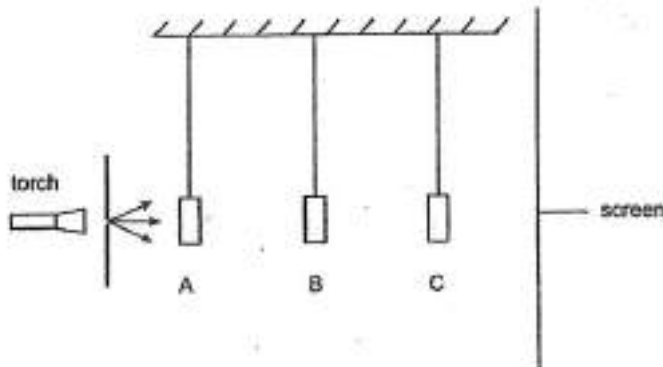
Primary 5 Science » Primary 5 Science (Term 2)

2 pts

Tim cut out three shapes, A, B and C, which were made of different materials as shown below.



He hung the three shapes in different positions in the set-up below.



The following diagram shows the shadows formed on the screen when the torch was switched on.



Based on the above observation, which one of the following most likely matches the shapes A, B and C to the properties?

- A)

Opaque	Translucent	Not possible to tell
A	B	C
- ✓ B)

Opaque	Translucent	Not possible to tell
B	A	C
- C)

Opaque	Translucent	Not possible to tell
B	C	A

D)

Opaque	Translucent	Not possible to tell
C	B	A

Question Type: Multiple Choice
 Randomize Answers: No
 Date Added: Thu 5th Aug 2021
 Last Modified: N/A
 QID#: 28,628,465

[Answers](#) | [Edit](#) | [Duplicate](#) | [Used In](#) | [Reorder](#)

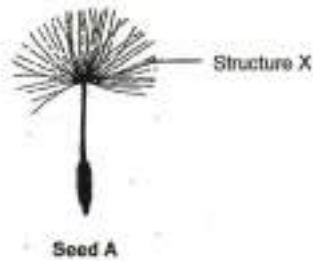
[Remove From Test](#)

Question 27

Primary 5 Science » Primary 5 Science (Term 2)

2 pts

Lily wanted to find out how structure X of seed A below helps it to disperse. She dropped the seed from a height of ten metres and recorded the time taken for the seed to land on the ground. She then repeated the experiment with structure X removed.



Which one of the following sets of results is most likely to be correct?

- ✓ A) Time taken for the seed to land on the ground (seconds)

Seed A (with structure X)	Seed A (without structure X)
7.5	5.8

- B) Time taken for the seed to land on the ground (seconds)

Seed A (with structure X)	Seed A (without structure X)
7.5	7.5

- C) Time taken for the seed to land on the ground (seconds)

Seed A (with structure X)	Seed A (without structure X)
5.8	7.5

- D) Time taken for the seed to land on the ground (seconds)

Seed A (with structure X)	Seed A (without structure X)
6.0	6.5

Question Type: Multiple Choice
Randomize Answers: No
Date Added: Thu 5th Aug 2021
Last Modified: N/A
QID#: 28,628,467

[Answers](#) | [Edit](#) | [Duplicate](#) | [Used In](#) | [Reorder](#)

[Remove From Test](#)

Question 28

Primary 5 Science » Primary 5 Science (Term 2)

2 pts

Some pollen grains were dusted on flowers A, B, C and D grown on a plant.



Flower A



Flower B



Flower C



Flower D

Which of the following flowers would most likely to develop into a fruit?

- A) A and B only
- ✓ B) A and C only
- C) B and D only
- D) B, C and D only

Question Type: Multiple Choice
Randomize Answers: No
Date Added: Thu 5th Aug 2021
Last Modified: N/A
QID#: 28,628,468

[Answers](#) | [Edit](#) | [Duplicate](#) | [Used In](#) | [Reorder](#)

[Remove From Test](#)

Question 29

Primary 5 Science » Primary 5 Science (Term 2)

0 pts

Harry prepared an experimental set-up as shown below.

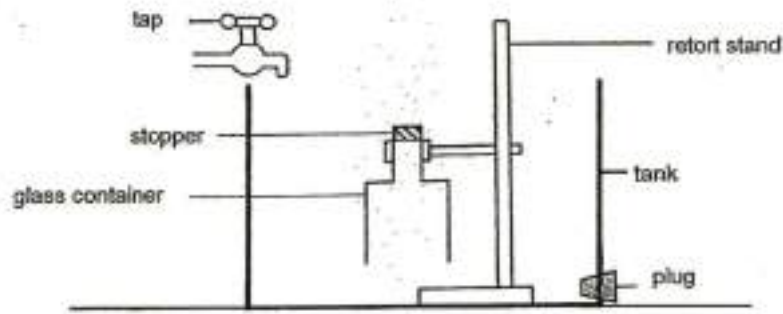


Diagram 1

At first, the tank was empty. Harry turned on the tap to fill the tank with water completely as shown in the diagram below.

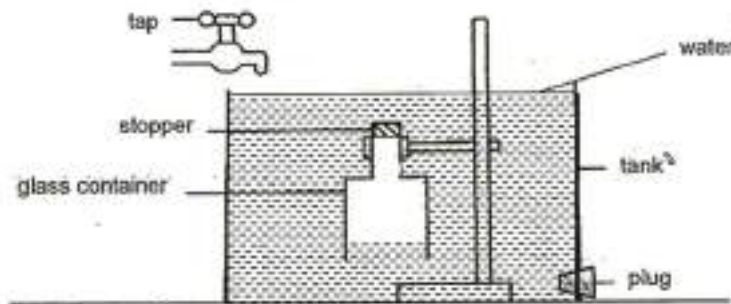


Diagram 2

Describe what would happen to the water level in the tank if the stopper on top of the glass container was removed. Explain your answer clearly. (2 marks)

This question is designed for extended answers that parent/ teacher will have to assign and guide child to attempt after the test has been completed.

Grading: This question type is not graded on this system and will not affect the final score as it was designed in such a way that it requires manual assistance.

Question Type: Essay
Date Added: Thu 5th Aug 2021
Last Modified: N/A
QID#: 28,628,473

Correctly answered feedback

The water level in the tank will decrease. When the stopper is removed, air escapes from the opening and water from the tank will rush into the container to occupy the space previously occupied by air.

Incorrectly answered feedback

The water level in the tank will decrease. When the stopper is removed, air escapes from the opening and water from the tank will rush into the container to occupy the space previously occupied by air.

[Answers](#) | [Edit](#) | [Duplicate](#) | [Used In](#) | [Reorder](#)

[Remove From Test](#)

Question 30

Primary 5 Science » Primary 5 Science (Term 2)

0 pts

Harry prepared an experimental set-up as shown below.

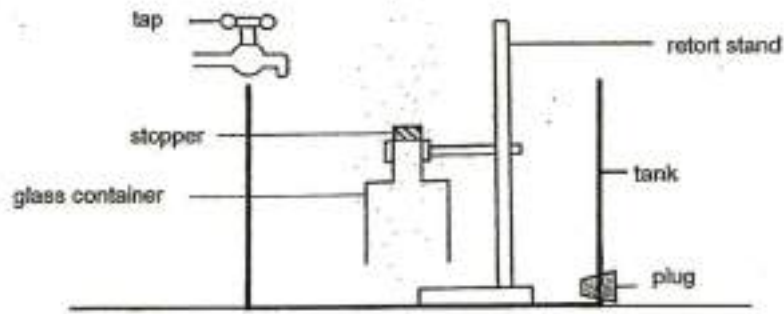


Diagram 1

At first, the tank was empty. Harry turned on the tap to fill the tank with water completely as shown in the diagram below.

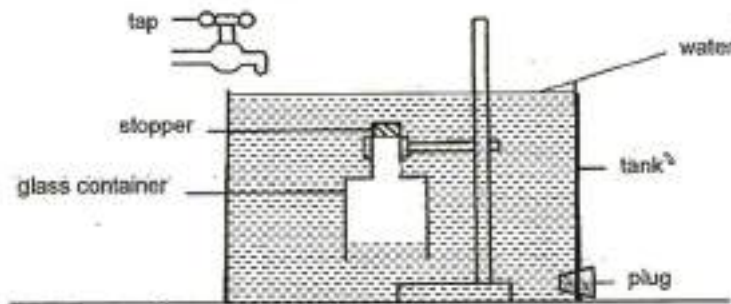


Diagram 2

Harry observed that the water did not fill the glass container completely to the top where the stopper was. Explain his observation. (2 marks)

This question is designed for extended answers that parent/ teacher will have to assign and guide child to attempt after the test has been completed.

Grading: This question type is not graded on this system and will not affect the final score as it was designed in such a way that it requires manual assistance.

Question Type: Essay
 Date Added: Thu 5th Aug 2021
 Last Modified: N/A
 QID#: 28,628,496

Correctly answered feedback

Air trapped in the container occupies space but can be compressed to allow

Incorrectly answered feedback

Air trapped in the container occupies space but can be compressed to allow

[Answers](#) | [Edit](#) | [Duplicate](#) | [Used In](#) | [Reorder](#)

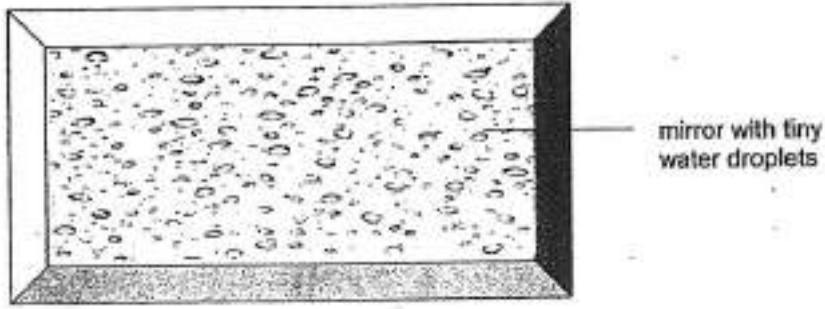
[Remove From Test](#)

Question 31

Primary 5 Science » Primary 5 Science (Term 2)

0 pts

After John had a hot shower, he observed that the mirror in the bathroom was fogged up with tiny water droplets as shown in the picture below.



Explain how the water droplets on the mirror were formed. (2 marks)

This question is designed for extended answers that parent/ teacher will have to assign and guide child to attempt after the test has been completed.

Grading: This question type is not graded on this system and will not affect the final score as it was designed in such a way that it requires manual assistance.

Question Type: Essay
Date Added: Thu 5th Aug 2021
Last Modified: N/A
QID#: 28,628,474

Correctly answered feedback

Warm water from the shower evaporates into water vapour, losing heat and condensed on the cooler surface of the mirror.

Incorrectly answered feedback

Warm water from the shower evaporates into water vapour, losing heat and condensed on the cooler surface of the mirror.

[Answers](#) | [Edit](#) | [Duplicate](#) | [Used In](#) | [Reorder](#)

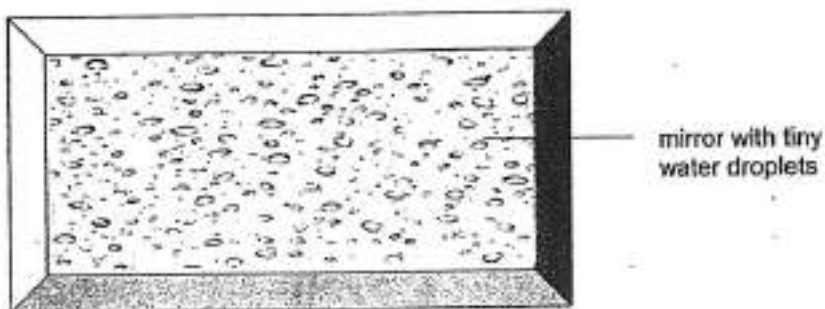
[Remove From Test](#)

Question 32

Primary 5 Science » Primary 5 Science (Term 2)

0 pts

After John had a hot shower, he observed that the mirror in the bathroom was fogged up with tiny water droplets as shown in the picture below.



John used a hair dryer and blew on a part of the fogged up mirror. It was observed that part of the misty mirror that was blown on became clear again.

Explain this observation clearly. (1 mark)

This question is designed for extended answers that parent/ teacher will have to assign and guide child to attempt after the test has been completed.

Grading: This question type is not graded on this system and will not affect the final score as it was designed in such a way that it requires manual assistance.

Question Type: Essay
Date Added: Thu 5th Aug 2021
Last Modified: N/A
QID#: 28,628,475

Correctly answered feedback

The water droplets gained heat from the hair dryer and evaporated.

Incorrectly answered feedback

The water droplets gained heat from the hair dryer and evaporated.

[Answers](#) | [Edit](#) | [Duplicate](#) | [Used In](#) | [Reorder](#)

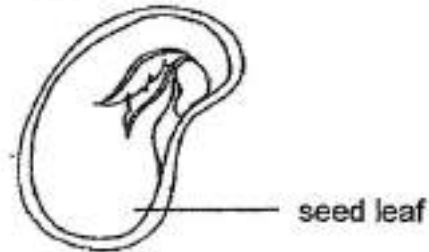
[Remove From Test](#)

Question 33

Primary 5 Science » Primary 5 Science (Term 2)

0 pts

Study the diagram below carefully.



What is the function of the seed leaf? (1 mark)

This question is designed for extended answers that parent/ teacher will have to assign and guide child to attempt after the test has been completed.

Grading: This question type is not graded on this system and will not affect the final score as it was designed in such a way that it requires manual assistance.

Question Type: Essay
Date Added: Thu 5th Aug 2021
Last Modified: N/A
QID#: 28,628,493

Correctly answered feedback

It provides food for the seedling.

Incorrectly answered feedback

It provides food for the seedling.

[Answers](#) | [Edit](#) | [Duplicate](#) | [Used In](#) | [Reorder](#)

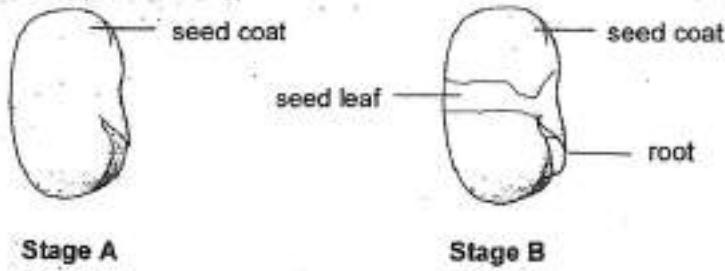
[Remove From Test](#)

Question 34

Primary 5 Science » Primary 5 Science (Term 2)

0 pts

Two stages, A and B, in the germinating process of a seed are shown below.



Give a reason for the increase in the mass of seed from Stage A to Stage B. [1]

This question is designed for extended answers that parent/ teacher will have to assign and guide child to attempt after the test has been completed.

Grading: This question type is not graded on this system and will not affect the final score as it was designed in such a way that it requires manual assistance.

Question Type: Essay
 Date Added: Thu 5th Aug 2021
 Last Modified: N/A
 QID#: 28,628,476

Correctly answered feedback

It absorbed water and gained mass.

Incorrectly answered feedback

It absorbed water and gained mass.

[Answers](#) | [Edit](#) | [Duplicate](#) | [Used In](#) | [Reorder](#)

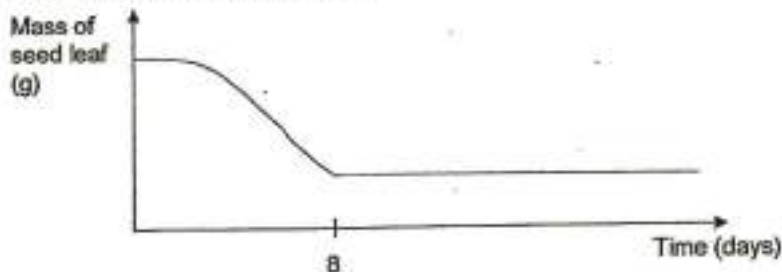
[Remove From Test](#)

Question 35

Primary 5 Science » Primary 5 Science (Term 2)

0 pts

The following shows an incomplete graph showing the change in the mass of the seed leaf during its development.

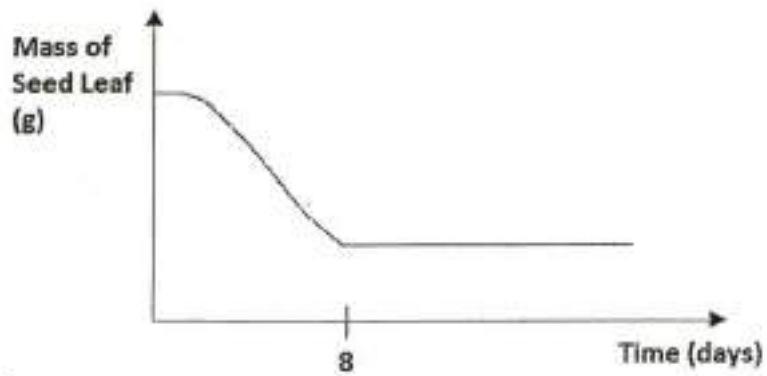
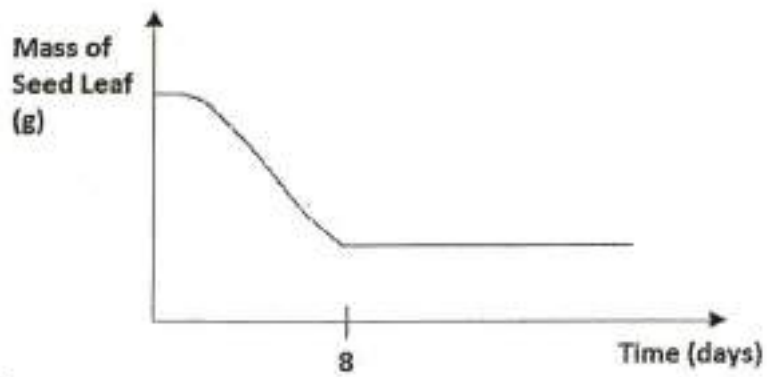


It was observed that green leaves emerge on day 8. In the graph above, continue the graph to show the change in the mass of the seed leaf from day 8 onwards. [1]

This question is designed for extended answers that parent/ teacher will have to assign and guide child to attempt after the test has been completed.

Grading: This question type is not graded on this system and will not affect the final score as it was designed in such a way that it requires manual assistance.

Question Type: Essay
Date Added: Thu 5th Aug 2021
Last Modified: N/A
QID#: 28,628,477

Correctly answered feedback**Incorrectly answered feedback**

[Answers](#) | [Edit](#) | [Duplicate](#) | [Used In](#) | [Reorder](#)

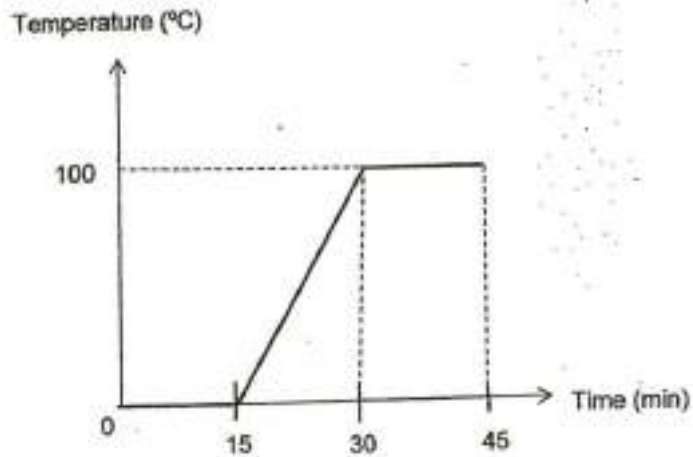
[Remove From Test](#)

Question 36

Primary 5 Science » Primary 5 Science (Term 2)

0 pts

Mary heated a beaker of ice over a period of time. The graph below shows the change in temperature of the ice as it was being heated.



What would happen to the temperature of the water if the beaker of water was removed from the heat

source at 100 °C and placed on a table in the room after one day? (1 mark)

This question is designed for extended answers that parent/ teacher will have to assign and guide child to attempt after the test has been completed.

Grading: This question type is not graded on this system and will not affect the final score as it was designed in such a way that it requires manual assistance.

Question Type: Essay
Date Added: Thu 5th Aug 2021
Last Modified: N/A
QID#: 28,628,479

Correctly answered feedback

The temperature of the water would decrease until it reached room temperature.

Incorrectly answered feedback

The temperature of the water would decrease until it reached room temperature.

[Answers](#) | [Edit](#) | [Duplicate](#) | [Used In](#) | [Reorder](#)

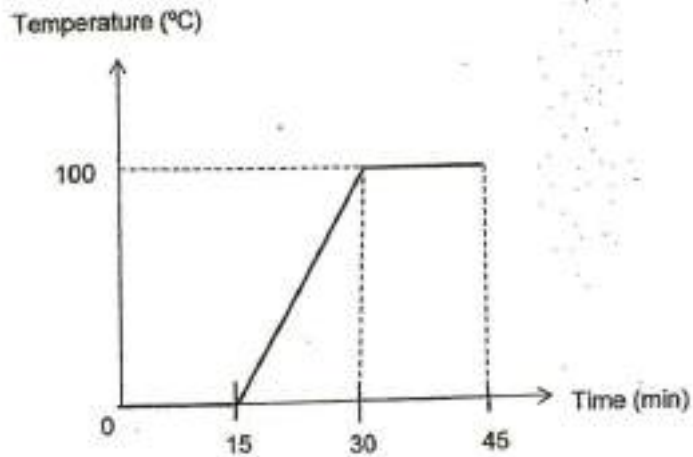
[Remove From Test](#)

Question 37

Primary 5 Science » Primary 5 Science (Term 2)

0 pts

Mary heated a beaker of ice over a period of time. The graph below shows the change in temperature of the ice as it was being heated.



Mary observed a decrease in the amount of water in the beaker after one day. Give a reason for her observation. (1 mark)

This question is designed for extended answers that parent/ teacher will have to assign and guide child to attempt after the test has been completed.

Grading: This question type is not graded on this system and will not affect the final score as it was designed in such a way that it requires manual assistance.

Question Type: Essay
Date Added: Thu 5th Aug 2021
Last Modified: N/A
QID#: 28,628,480

Correctly answered feedback

Some water evaporated to form water vapour.

Incorrectly answered feedback

Some water evaporated to form water vapour.

[Answers](#) | [Edit](#) | [Duplicate](#) | [Used In](#) | [Reorder](#)

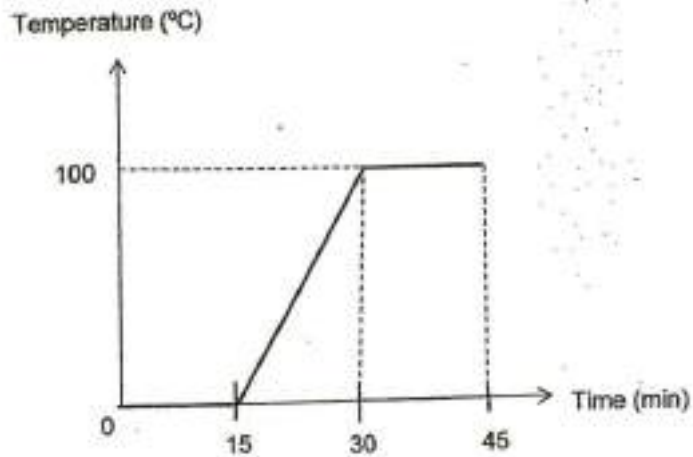
[Remove From Test](#)

Question 38

Primary 5 Science » Primary 5 Science (Term 2)

1 pt

Mary heated a beaker of ice over a period of time. The graph below shows the change in temperature of the ice as it was being heated.



Based on the graph above, how long did it take for the ice to melt completely?

Accepted answers:

- ✓ 15 minutes
- ✓ 15 mins
- ✓ 15 min

Question Type: Free Text
Date Added: Thu 5th Aug 2021
Last Modified: N/A
QID#: 28,628,499

[Answers](#) | [Edit](#) | [Duplicate](#) | [Used In](#) | [Reorder](#)

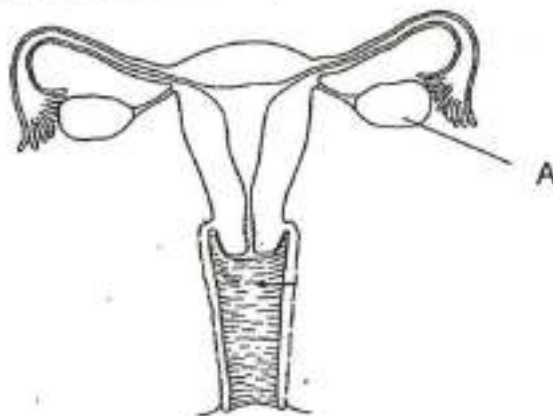
[Remove From Test](#)

Question 39

Primary 5 Science » Primary 5 Science (Term 2)

0 pts

The diagram below shows a female reproductive system.



If part A in the diagram above was removed, can the female still reproduce? Give a reason for your answer. (2 marks)

This question is designed for extended answers that parent/ teacher will have to assign and guide child to attempt after the test has been completed.

Grading: This question type is not graded on this system and will not affect the final score as it was designed in such a way that it requires manual assistance.

Question Type: Essay
Date Added: Thu 5th Aug 2021
Last Modified: N/A
QID#: 28,628,482

Correctly answered feedback

Yes there is still another ovary to produce egg for fertilisation to take place.

Incorrectly answered feedback

Yes there is still another ovary to produce egg for fertilisation to take place.

[Answers](#) | [Edit](#) | [Duplicate](#) | [Used In](#) | [Reorder](#)

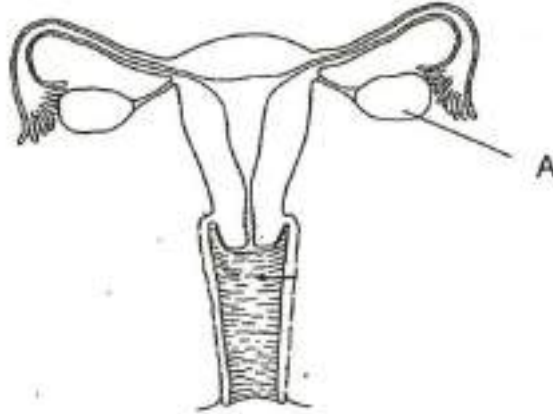
[Remove From Test](#)

Question 40

Primary 5 Science » Primary 5 Science (Term 2)

0 pts

The diagram below shows a female reproductive system.



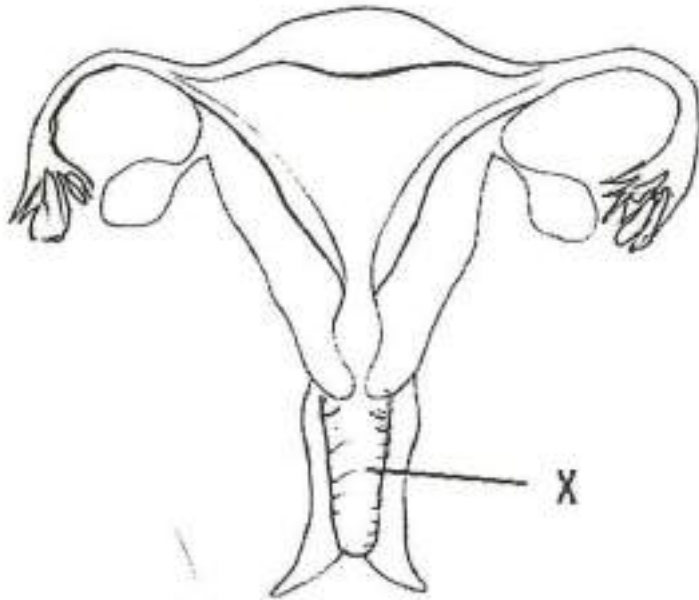
Label with an 'X' in the diagram to show the part which receives the male reproductive cells. (1 mark)

This question is designed for extended answers that parent/ teacher will have to assign and guide child to attempt after the test has been completed.

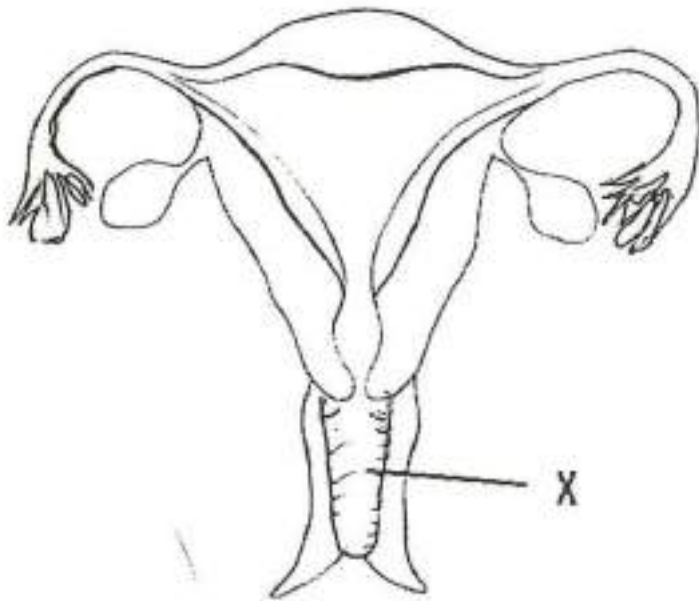
Grading: This question type is not graded on this system and will not affect the final score as it was designed in such a way that it requires manual assistance.

Question Type: Essay
Date Added: Thu 5th Aug 2021
Last Modified: N/A
QID#: 28,628,484

Correctly answered feedback



Incorrectly answered feedback



[Answers](#) | [Edit](#) | [Duplicate](#) | [Used In](#) | [Reorder](#)

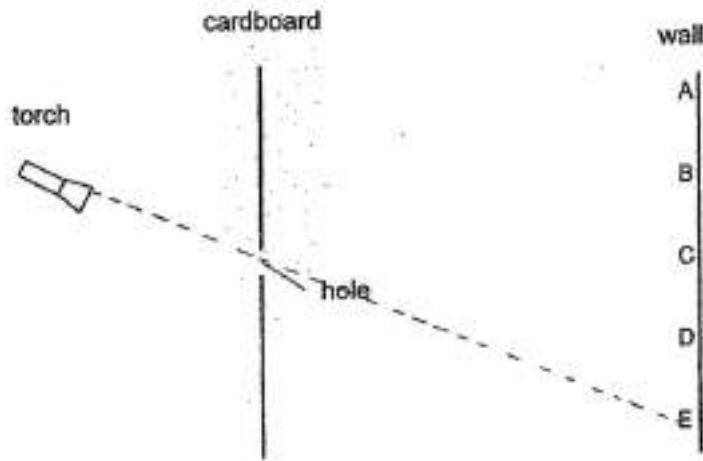
[Remove From Test](#)

Question 41

Primary 5 Science » Primary 5 Science (Term 2)

0 pts

Siew Lee prepared an experiment set-up shown below. Light from the torch passes through the hole in the cardboard and forms a bright spot on the wall.



Without moving the positions of items in the set-up above, suggest what Siew Lee could do so that a larger area of bright spot of light would be formed on the wall. (1 marks)

This question is designed for extended answers that parent/ teacher will have to assign and guide child to attempt after the test has been completed.

Grading: This question type is not graded on this system and will not affect the final score as it was designed in such a way that it requires manual assistance.

Question Type: Essay
Date Added: Thu 5th Aug 2021
Last Modified: N/A
QID#: 28,628,485

Correctly answered feedback

Siew Lee could make a bigger hole from the cardboard.

Incorrectly answered feedback

Siew Lee could make a bigger hole from the cardboard.

[Answers](#) | [Edit](#) | [Duplicate](#) | [Used In](#) | [Reorder](#)

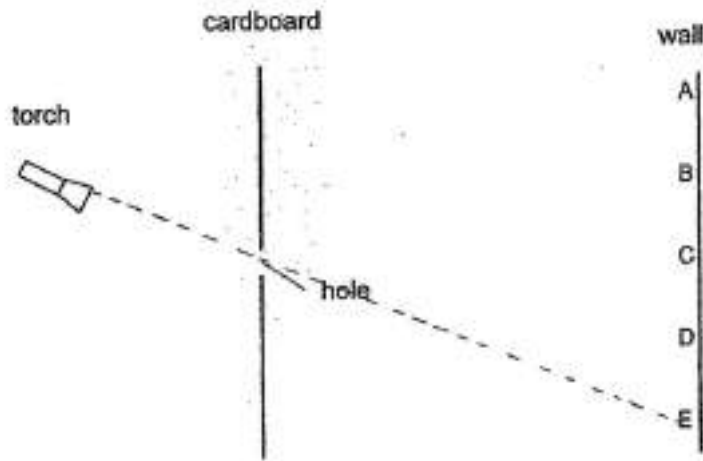
[Remove From Test](#)

Question 42

Primary 5 Science » Primary 5 Science (Term 2)

1 pt

Siew Lee prepared an experiment set-up shown below. Light from the torch passes through the hole in the cardboard and forms a bright spot on the wall.



Which part on the wall, A, B, C, D or E, will a bright spot of light be formed? (1

Accepted answers:

- ✓ Part E
- ✓ E

Question Type: Free Text
 Date Added: Thu 5th Aug 2021
 Last Modified: N/A
 QID#: 28,628,502

[Answers](#) | [Edit](#) | [Duplicate](#) | [Used In](#) | [Reorder](#)

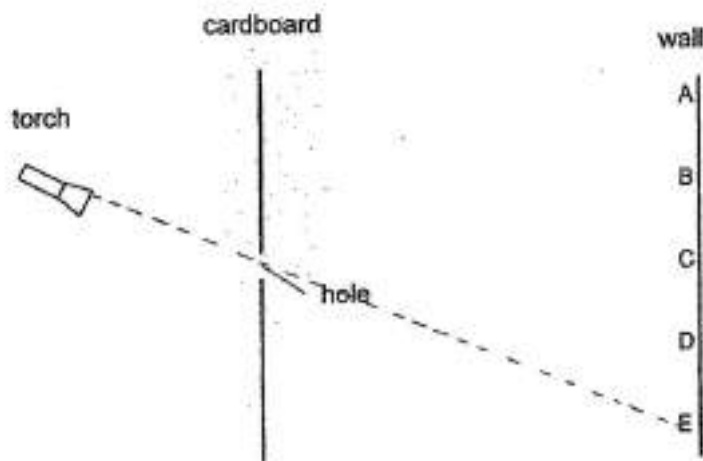
[Remove From Test](#)

Question 43

Primary 5 Science » Primary 5 Science (Term 2)

0 pts

Siew Lee prepared an experiment set-up shown below. Light from the torch passes through the hole in the cardboard and forms a bright spot on the wall.



State a property of light that explains your answer in the previous question. (1 mark)

This question is designed for extended answers that parent/ teacher will have to assign and guide child to attempt after the test has been completed.

Grading: This question type is not graded on this system and will not affect the final score as it was designed in such a way that it requires manual assistance.

Question Type: Essay
Date Added: Thu 5th Aug 2021
Last Modified: N/A
QID#: 28,628,481

Correctly answered feedback

Light travels in a straight line.

Incorrectly answered feedback

Light travels in a straight line.

[Answers](#) | [Edit](#) | [Duplicate](#) | [Used In](#) | [Reorder](#)

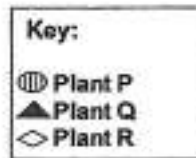
[Remove From Test](#)

Question 44

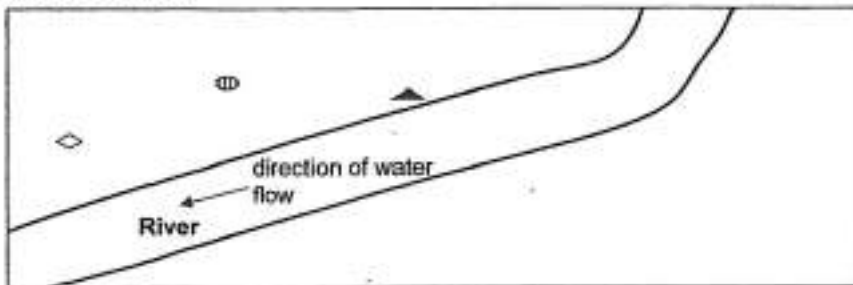
Primary 5 Science » Primary 5 Science (Term 2)

0 pts

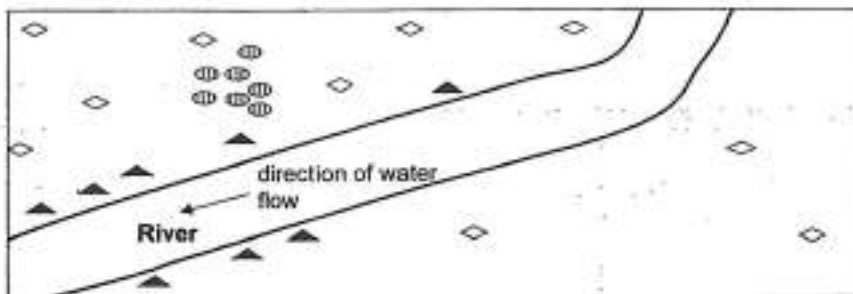
Hasan studied the distribution of plants P, Q and R in an area over a year. His observations are shown below.



First observation



Observation one year later



The young of plant R grow healthier than those of plant P. Based on the information in the diagram, explain clearly why the method of seed dispersal of plant R has an advantage as compared to plant P. (2 marks)

This question is designed for extended answers that parent/ teacher will have to assign and guide child to attempt after the test has been completed.

Grading: This question type is not graded on this system and will not affect the final score as it was designed in such a way that it requires manual assistance.

Question Type: Essay
Date Added: Thu 5th Aug 2021
Last Modified: N/A
QID#: 28,628,486

Correctly answered feedback

There is less overcrowding for the young of plant R, resulting in less competition for sunlight, water, space and mineral salts, and leading to healthy growth.

Incorrectly answered feedback

There is less overcrowding for the young of plant R, resulting in less competition for sunlight, water, space and mineral salts, and leading to healthy growth.

Answers | Edit | Duplicate | Used In | Reorder

Remove From Test

Question 45

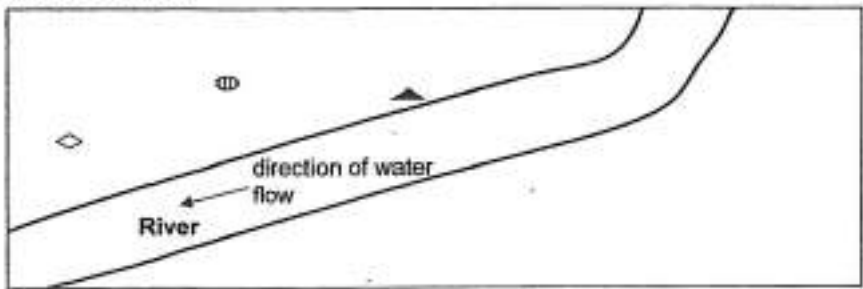
Primary 5 Science » Primary 5 Science (Term 2)

0.6 pts

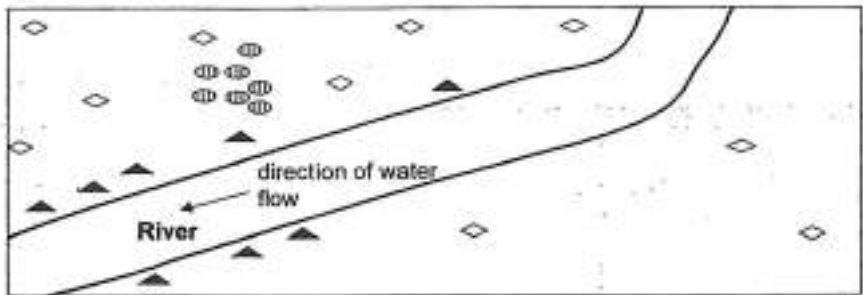
Hasan studied the distribution of plants P, Q and R in an area over a year. His observations are shown below.

Key:
 ○ Plant P
 ▲ Plant Q
 ◇ Plant R

First observation



Observation one year later



Based on the diagram, state the method of seed dispersal of plant P in the table below.

Plant	P
Method of seed dispersal	By _____

Accepted answers:

- ✓ By splitting
- ✓ Splitting

Question Type: Free Text
Date Added: Thu 5th Aug 2021
Last Modified: N/A
QID#: 28,628,497

[Answers](#) | [Edit](#) | [Duplicate](#) | [Used In](#) | [Reorder](#)

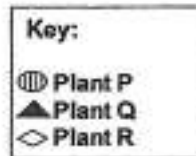
[Remove From Test](#)

Question 46

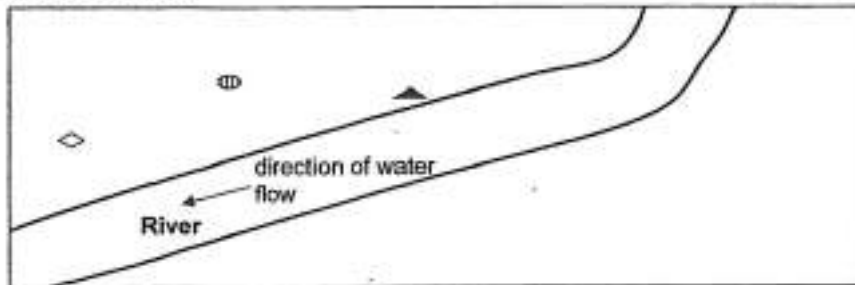
Primary 5 Science » Primary 5 Science (Term 2)

0.8 pts

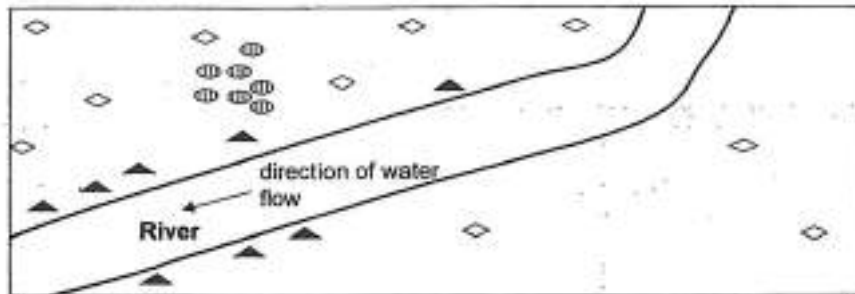
Hasan studied the distribution of plants P, Q and R in an area over a year. His observations are shown below.



First observation



Observation one year later



Based on the diagram, state the method of seed dispersal of plant R in the table below.

Plant	R
Method of seed dispersal	By _____

Accepted answers:

- ✓ By wind/ Animal
- ✓ wind
- ✓ By wind
- ✓ by animal
- ✓ Animal
- ✓ Animal / wind
- Wind / Animal



Question Type: Free Text
Date Added: Thu 5th Aug 2021
Last Modified: N/A
QID#: 28,628,503

[Answers](#) | [Edit](#) | [Duplicate](#) | [Used In](#) | [Reorder](#)

[Remove From Test](#)

Question 47

Primary 5 Science » Primary 5 Science (Term 2)

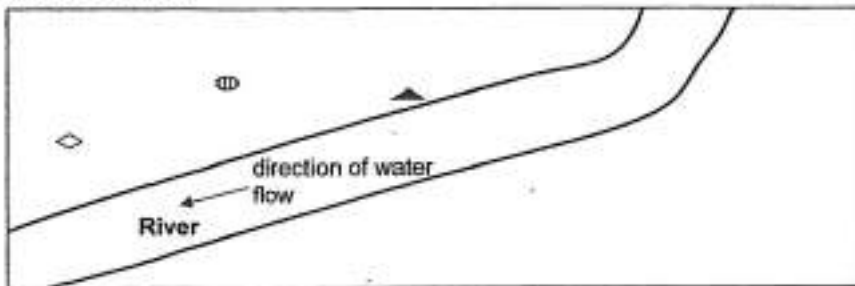
0.6 pts

Hasan studied the distribution of plants P, Q and R in an area over a year. His observations are shown below.

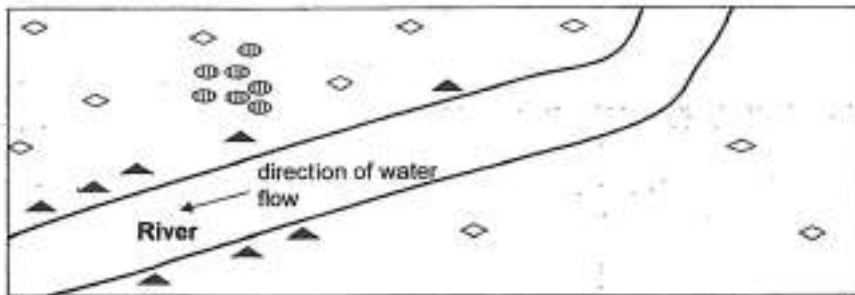
Key:

⊞ Plant P
 ▲ Plant Q
 ◇ Plant R

First observation



Observation one year later



Based on the diagram, state the method of seed dispersal of plant Q in the table below.

Plant	Q
Method of seed dispersal	By _____

Accepted answers:

✓ By water

✓ water

Question Type: Free Text
Date Added: Thu 5th Aug 2021
Last Modified: N/A

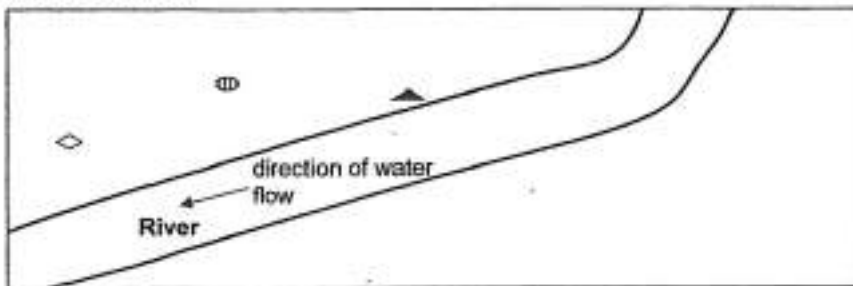
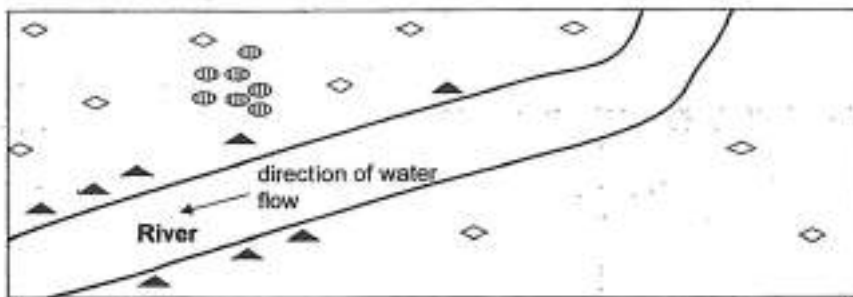
QID#: 28,628,498

[Answers](#) | [Edit](#) | [Duplicate](#) | [Used In](#) | [Reorder](#)
[Remove From Test](#)**Question 48**

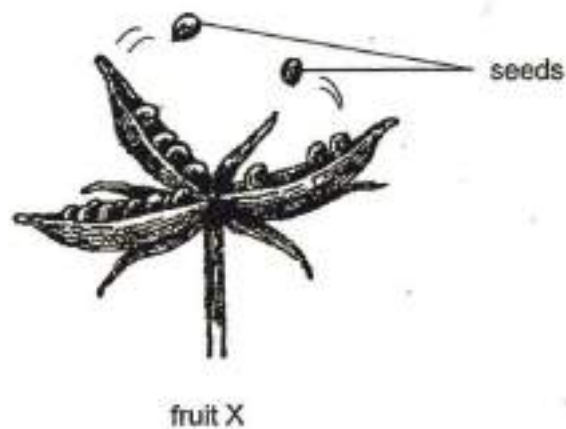
Primary 5 Science » Primary 5 Science (Term 2)

1 pt

Hasan studied the distribution of plants P, Q and R in an area over a year. His observations are shown below.

**First observation****Observation one year later**

The diagram below shows pod-like fruit X.



Which of the plants P, Q or R would produce fruit X? Give a reason for your answer.

Accepted answers:

✓ Plant P.

✓ plant P

✓ P

Question Type: Free Text
Date Added: Thu 5th Aug 2021
Last Modified: N/A
QID#: 28,628,505

Correctly answered feedback

Plant P. The seeds are dispersed nearest to the parent plant.

Incorrectly answered feedback

Plant P. The seeds are dispersed nearest to the parent plant.

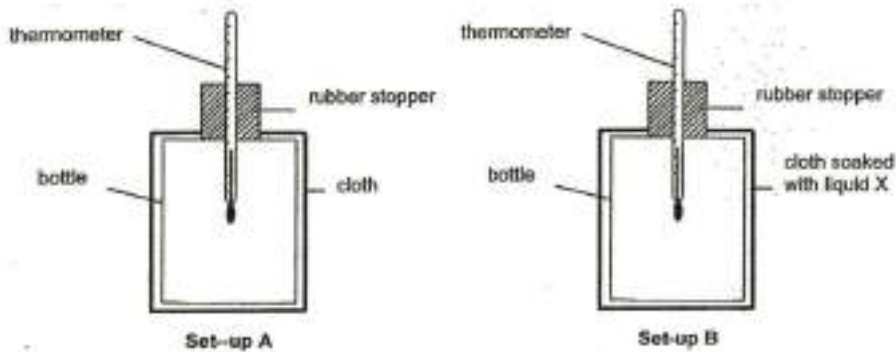
[Answers](#) |
 [Edit](#) |
 [Duplicate](#) |
 [Used In](#) |
 [Reorder](#)

[Remove From Test](#)**Question 49**

Primary 5 Science » Primary 5 Science (Term 2)

0 pts

Ashlyn set up an experiment as shown below. She wrapped the bottles with identical pieces of cloths.



She recorded the change in the temperature of air in Set-ups A and B in the table below.

Set-up	Temperature of air in the bottle (°C)	
	At first	After 20 minutes
A	30	30
B	30	25

Based on the information above, what happened to the temperature of air in bottle B after 20 minutes? (1 mark)

This question is designed for extended answers that parent/ teacher will have to assign and guide child to attempt after the test has been completed.

Grading: This question type is not graded on this system and will not affect the final score as it was designed in such a way that it requires manual assistance.

Question Type: Essay
Date Added: Thu 5th Aug 2021
Last Modified: N/A
QID#: 28,628,487

Correctly answered feedback

The temperature of the air in the bottle B decreased.

Incorrectly answered feedback

The temperature of the air in the bottle B decreased.

[Answers](#) | [Edit](#) | [Duplicate](#) | [Used In](#) | [Reorder](#)

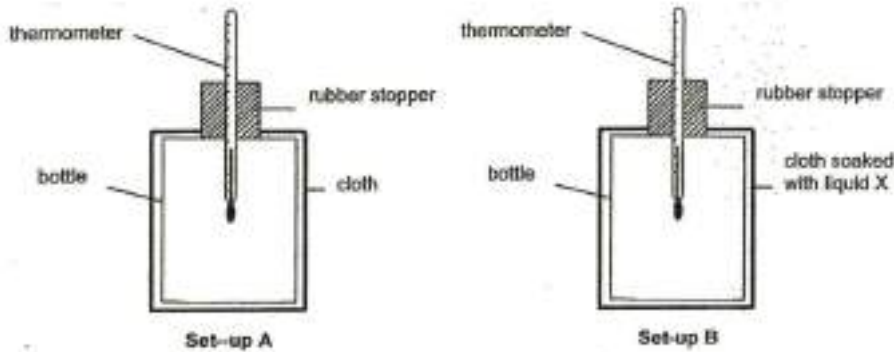
[Remove From Test](#)

Question 50

Primary 5 Science » Primary 5 Science (Term 2)

0 pts

Ashlyn set up an experiment as shown below. She wrapped the bottles with identical pieces of cloths.



She recorded the change in the temperature of air in Set-ups A and B in the table below.

Set-up	Temperature of air in the bottle (°C)	
	At first	After 20 minutes
A	30	30
B	30	25

Ashlyn wiped her hands with a piece of tissue paper which was soaked with liquid X. After a while, her hands felt cooler than before.

Explain why Ashlyn's hands felt cooler.

This question is designed for extended answers that parent/ teacher will have to assign and guide child to attempt after the test has been completed.

Grading: This question type is not graded on this system and will not affect the final score as it was designed in such a way that it requires manual assistance.

Question Type: Essay

Date Added: Thu 5th Aug 2021

Last Modified: N/A

QID#: 28,628,488

Correctly answered feedback

As liquid X evaporate, Ashlyn's hands lost heat to liquid X.

Incorrectly answered feedback

As liquid X evaporate, Ashlyn's hands lost heat to liquid X.

[Answers](#) | [Edit](#) | [Duplicate](#) | [Used In](#) | [Reorder](#)

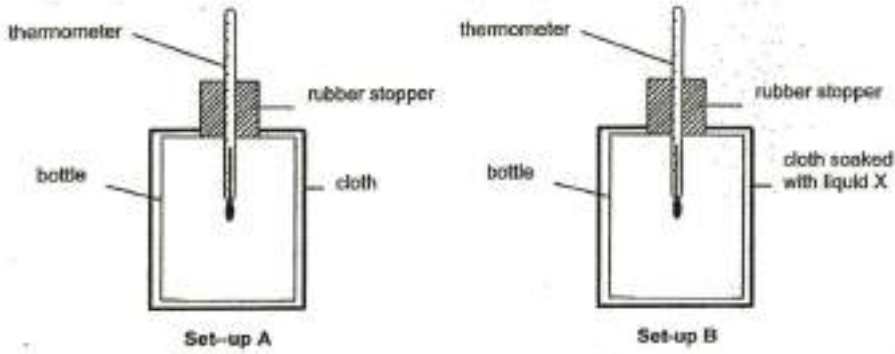
[Remove From Test](#)

Question 51

Primary 5 Science » Primary 5 Science (Term 2)

0 pts

Ashlyn set up an experiment as shown below. She wrapped the bottles with identical pieces of cloths.



She recorded the change in the temperature of air in Set-ups A and B in the table below.

Set-up	Temperature of air in the bottle (°C)	
	At first	After 20 minutes
A	30	30
B	30	25

Without using any equipment, what could Ashlyn do to increase the rate of evaporation of liquid X on her hands?

This question is designed for extended answers that parent/ teacher will have to assign and guide child to attempt after the test has been completed.

Grading: This question type is not graded on this system and will not affect the final score as it was designed in such a way that it requires manual assistance.

Question Type: Essay
Date Added: Thu 5th Aug 2021
Last Modified: N/A
QID#: 28,628,489

Correctly answered feedback

Blow on her hands.

Incorrectly answered feedback

Blow on her hands.

[Answers](#) | [Edit](#) | [Duplicate](#) | [Used In](#) | [Reorder](#)

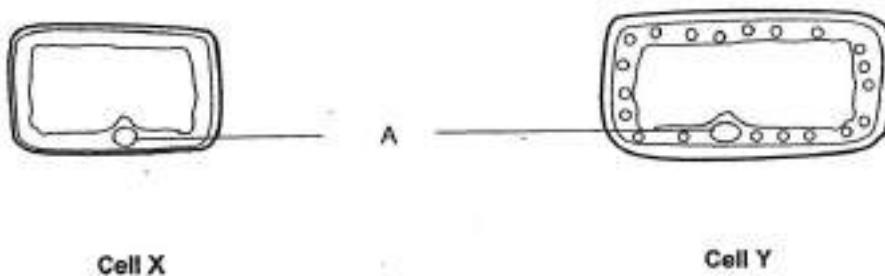
[Remove From Test](#)

Question 52

Primary 5 Science » Primary 5 Science (Term 2)

0 pts

The diagrams below show two plant cells, X and Y.



State one similarity between Cell X and Cell Y. (1 mark)

This question is designed for extended answers that parent/ teacher will have to assign and guide child

to attempt after the test has been completed.

Grading: This question type is not graded on this system and will not affect the final score as it was designed in such a way that it requires manual assistance.

Question Type: Essay
Date Added: Thu 5th Aug 2021
Last Modified: N/A
QID#: 28,628,478

Correctly answered feedback

Both have a cell membrane / cell wall / nucleus / cytoplasm.

Incorrectly answered feedback

Both have a cell membrane / cell wall / nucleus / cytoplasm.

[Answers](#) | [Edit](#) | [Duplicate](#) | [Used In](#) | [Reorder](#)

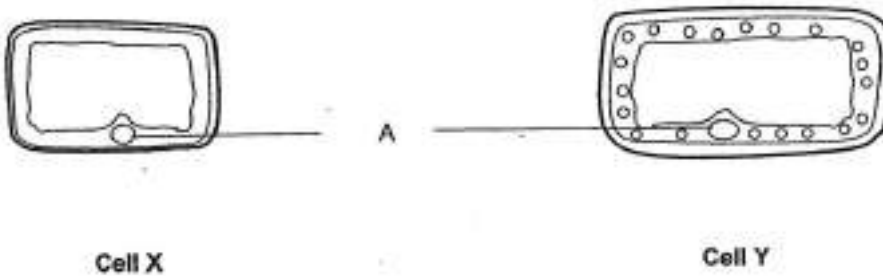
[Remove From Test](#)

Question 53

Primary 5 Science » Primary 5 Science (Term 2)

0 pts

The diagrams below show two plant cells, X and Y.



What is the function of part A in Cells X and Y? (1 mark)

This question is designed for extended answers that parent/ teacher will have to assign and guide child to attempt after the test has been completed.

Grading: This question type is not graded on this system and will not affect the final score as it was designed in such a way that it requires manual assistance.

Question Type: Essay
Date Added: Thu 5th Aug 2021
Last Modified: N/A
QID#: 28,628,492

Correctly answered feedback

It controls activities in the cell.

Incorrectly answered feedback

It controls activities in the cell.

[Answers](#) | [Edit](#) | [Duplicate](#) | [Used In](#) | [Reorder](#)

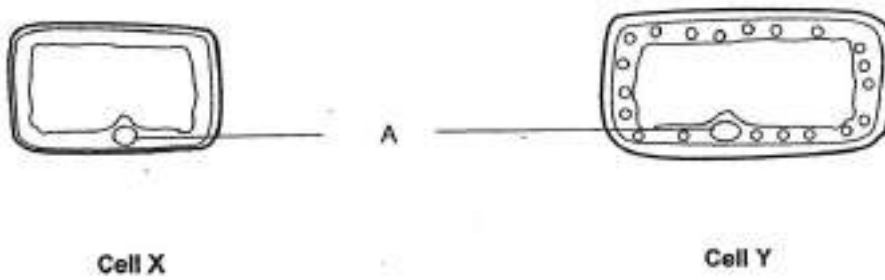
[Remove From Test](#)

Question 54

Primary 5 Science » Primary 5 Science (Term 2)

1 pt

The diagrams below show two plant cells, X and Y.



Which cell, X or Y is taken from the leaf?
Give a reason for your answer.

Accepted answers:

- ✓ Cell Y
- ✓ Y

Question Type: Free Text
Date Added: Thu 5th Aug 2021
Last Modified: N/A
QID#: 28,628,501

[Answers](#) | [Edit](#) | [Duplicate](#) | [Used In](#) | [Reorder](#)

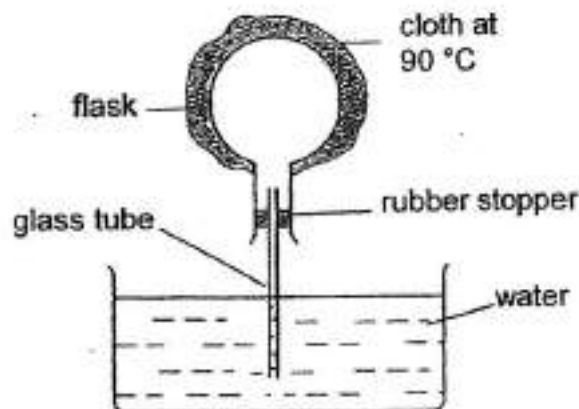
[Remove From Test](#)

Question 55

Primary 5 Science » Primary 5 Science (Term 2)

0 pts

Steven set up the experiment below.



Steven observed bubbles escaping into the water from the glass tube after few seconds. Give a reason for his observation. (1 mark)

This question is designed for extended answers that parent/ teacher will have to assign and guide child to attempt after the test has been completed.

Grading: This question type is not graded on this system and will not affect the final score as it was designed in such a way that it requires manual assistance.

Question Type: Essay
Date Added: Thu 5th Aug 2021
Last Modified: N/A

QID#: 28,628,494

Correctly answered feedback

The air in the flask gain heat from the hot cloth through the flask and expanded.

Incorrectly answered feedback

The air in the flask gain heat from the hot cloth through the flask and expanded.

[Answers](#) | [Edit](#) | [Duplicate](#) | [Used In](#) | [Reorder](#)

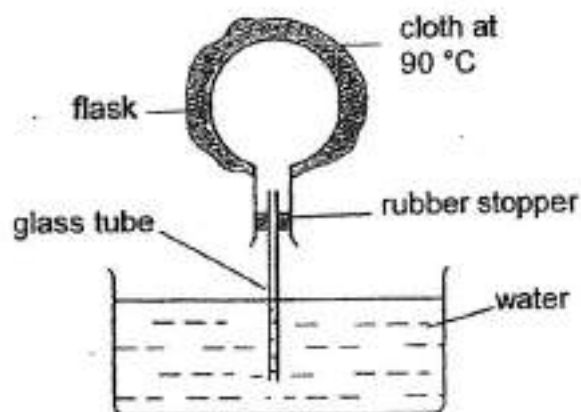
[Remove From Test](#)

Question 56

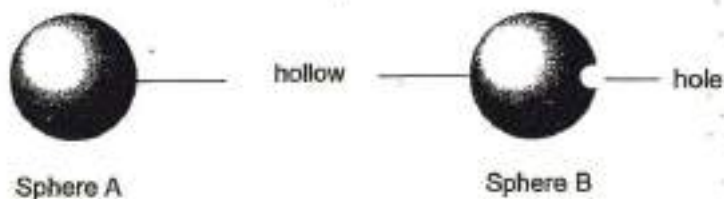
Primary 5 Science » Primary 5 Science (Term 2)

0 pts

Steven set up the experiment below.



Steven moulded two pieces of clay into two hollow spheres as shown below.



He placed the two pieces of dried clay spheres into a kiln and fired them at high temperature. During the firing process, it was observed that one of the spheres cracked into pieces but not the other one.

(2 marks)

This question is designed for extended answers that parent/ teacher will have to assign and guide child to attempt after the test has been completed.

Grading: This question type is not graded on this system and will not affect the final score as it was designed in such a way that it requires manual assistance.

Question Type: Essay
 Date Added: Thu 5th Aug 2021
 Last Modified: N/A
 QID#: 28,628,495

Correctly answered feedback

Sphere A. The air trapped inside the sphere gained heat and expanded.

Incorrectly answered feedback

Sphere A. The air trapped inside the sphere gained heat and expanded.

[Answers](#) | [Edit](#) | [Duplicate](#) | [Used In](#) | [Reorder](#)

[Remove From Test](#)

Question 57

Primary 5 Science » Primary 5 Science (Term 2)

1 pt

Tina wanted to find out the conditions that affected the growth of bread mould. She put water on different types of bread and recorded the conditions in the table below.

Set-up	Type of bread	Number of days before mould appears	Temperature of surrounding air (°C)	Amount of water on bread (mL)
1	A	9	30	0
2	B	8	5	4
3	C	7	0	4
4	D	4	30	20

Which two set-ups should Tina compare to find out the effect of water on the growth of bread mould?

Accepted answers:

- ✓ Set-up 1 and 4
- ✓ 1 and 4
- ✓ 4 and 1
- ✓ Set-ups 1 and 4
- ✓ Set-ups 4 and 1
- ✓ Set-up 4 and 1
- ✓ setup 1 and 4
- ✓ Setups 1 and 4
- ✓ setups 4 and 1

Question Type: Free Text
Date Added: Thu 5th Aug 2021
Last Modified: N/A
QID#: 28,628,500

[Answers](#) | [Edit](#) | [Duplicate](#) | [Used In](#) | [Reorder](#)

[Remove From Test](#)

Question 58

Primary 5 Science » Primary 5 Science (Term 2)

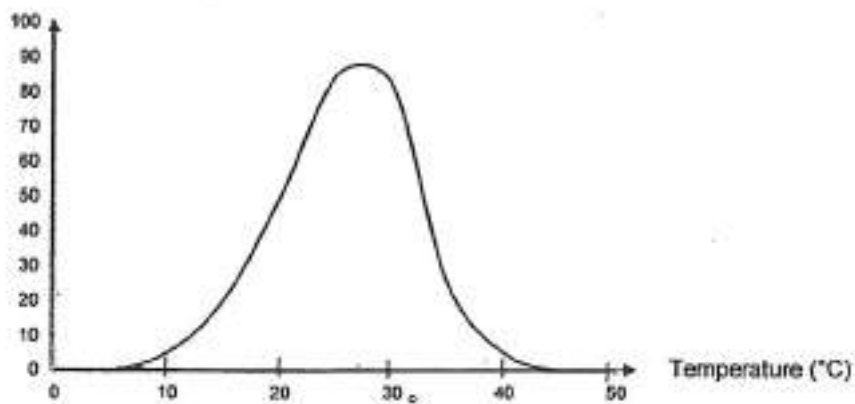
1 pt

Tina wanted to find out the conditions that affected the growth of bread mould. She put water on different types of bread and recorded the conditions in the table below.

Set-up	Type of bread	Number of days before mould appears	Temperature of surrounding air (°C)	Amount of water on bread (mℓ)
1	A	9	30	0
2	B	8	5	4
3	C	7	0	4
4	D	4	30	20

Tina plotted a graph which shows how the growth rate of bread mould changes with temperature below.

Amount of bread mould



Based on the graph above, state the temperature that is most favourable for the bread mould to grow.

Accepted answers:

- ✓ 25 degree Celsius
- ✓ 25

Question Type: Free Text
 Date Added: Thu 5th Aug 2021
 Last Modified: N/A
 QID#: 28,628,504

Correctly answered feedback

○
25 °C

[Answers](#) |
 [Edit](#) |
 [Duplicate](#) |
 [Used In](#) |
 [Reorder](#)

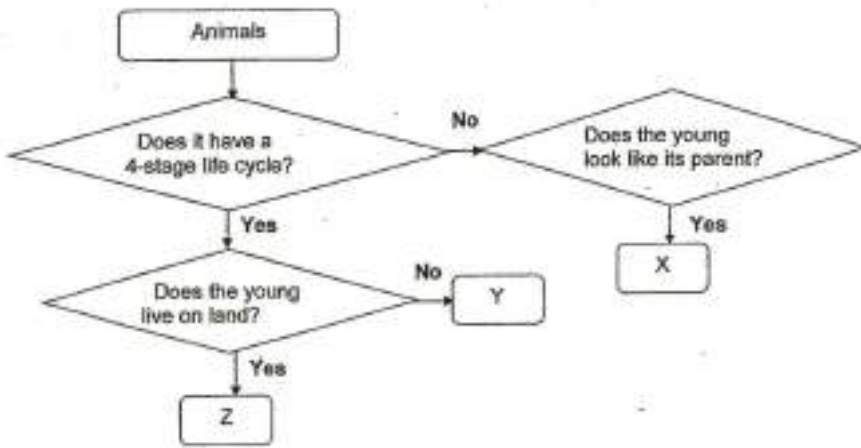
[Remove From Test](#)

Question 59

Primary 5 Science » Primary 5 Science (Term 2)

0 pts

Siti classified three animals using the flow chart below.



Based on the flowchart, state one similarity and one difference between the animals Y and Z. (2 marks)

Similarity: _____
 Difference: _____

This question is designed for extended answers that parent/ teacher will have to assign and guide child to attempt after the test has been completed.

Grading: This question type is not graded on this system and will not affect the final score as it was designed in such a way that it requires manual assistance.

Question Type: Essay
 Date Added: Thu 5th Aug 2021
 Last Modified: N/A
 QID#: 28,628,490

Correctly answered feedback

Similarity	Animals Y and Z have a 4 – stage life cycle.
Difference	Animal Z’s young lives on land, but Animal Y’s young does not.

Incorrectly answered feedback

Similarity	Animals Y and Z have a 4 – stage life cycle.
Difference	Animal Z’s young lives on land, but Animal Y’s young does not.

[Answers](#) |
 [Edit](#) |
 [Duplicate](#) |
 [Used In](#) |
 [Reorder](#)

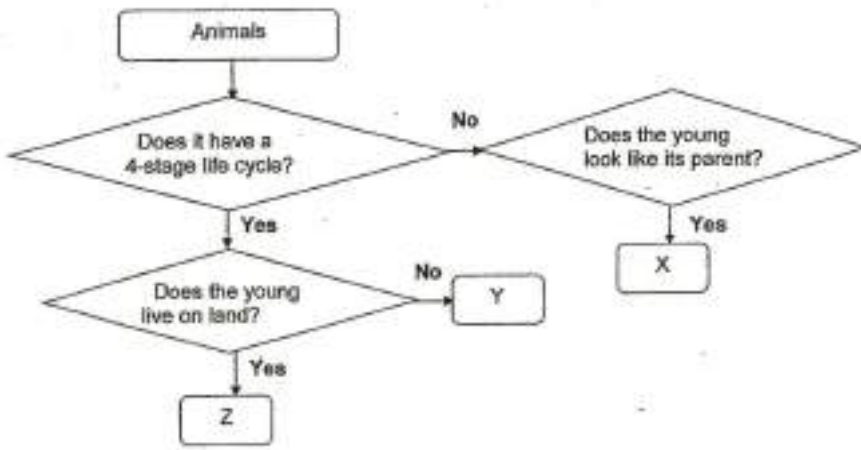
[Remove From Test](#)

Question 60

Primary 5 Science » Primary 5 Science (Term 2)

2 pts

Siti classified three animals using the flow chart below.

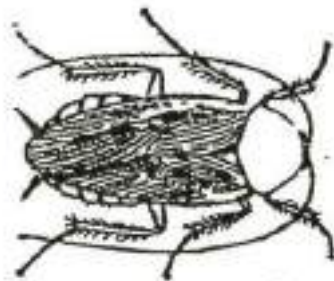


the insect with letters X, Y or Z.

Match

Clue

Match



cockroach

X

Points: +1 -0

Z



butterfly

Points: +1 -0

Incorrect match option

Y

Question Type: Matching
 Shuffle Mode: Shuffle Matches Only
 Date Added: Thu 5th Aug 2021
 Last Modified: N/A
 QID#: 28,628,508

Answers | Edit | Duplicate | Used In | Reorder

Remove From Test

Question 61

Tina wanted to find out the conditions that affected the growth of bread mould. She put water on different types of bread and recorded the conditions in the table below.

Set-up	Type of bread	Number of days before mould appears	Temperature of surrounding air (°C)	Amount of water on bread (mℓ)
1	A	9	30	0
2	B	8	5	4
3	C	7	0	4
4	D	4	30	20

How do mould and mushrooms reproduce? (1 mark)

This question is designed for extended answers that parent/ teacher will have to assign and guide child to attempt after the test has been completed.

Grading: This question type is not graded on this system and will not affect the final score as it was designed in such a way that it requires manual assistance.

Question Type: Essay
 Date Added: Thu 5th Aug 2021
 Last Modified: N/A
 QID#: 28,628,483

Correctly answered feedback

They reproduce by spores.

Incorrectly answered feedback

They reproduce by spores.

[Answers](#) | [Edit](#) | [Duplicate](#) | [Used In](#) | [Reorder](#)

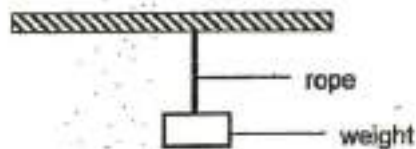
[Remove From Test](#)

Question 62

Primary 5 Science » Primary 5 Science (Term 2)

1 pt

Mrs Lee tested the strength of three types of ropes, X, Y and Z, by hanging weights onto each of them. She added the weights hung onto the rope one by one until the rope started to break.



The maximum weight that the ropes could hold is shown in the table below.

Ropes	X	Y	Z
Maximum weight the rope can hold before it starts to break (kg)	13	100	80

Arrange the ropes, X, Y and Z starting with the strongest rope.

Accepted answers:

- ✓ Y, Z, X
- ✓ Rope Y, Rope Z, Rope X
- ✓ y z x

Question Type: Free Text
 Date Added: Thu 5th Aug 2021
 Last Modified: N/A
 QID#: 28,628,506

[Answers](#) | [Edit](#) | [Duplicate](#) | [Used In](#) | [Reorder](#)

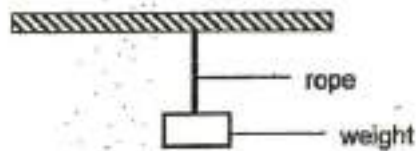
[Remove From Test](#)

Question 63

Primary 5 Science » Primary 5 Science (Term 2)

0 pts

Mrs Lee tested the strength of three types of ropes, X, Y and Z, by hanging weights onto each of them. She added the weights hung onto the rope one by one until the rope started to break.



The maximum weight that the ropes could hold is shown in the table below.

Ropes	X	Y	Z
Maximum weight the rope can hold before it starts to break (kg)	13	100	80

The properties of materials P, Q and R are as shown in the table below.

A tick (✓) shows the presence of the property.

Materials	P	Q	R
Strong	✓	✓	
Flexible	✓		
Waterproof	✓	✓	✓

Is material P suitable material to be made into part B of the swing? Explain your answer clearly. [1]

This question is designed for extended answers that parent/ teacher will have to assign and guide child to attempt after the test has been completed.

Grading: This question type is not graded on this system and will not affect the final score as it was designed in such a way that it requires manual assistance.

Question Type: Essay
 Date Added: Thu 5th Aug 2021
 Last Modified: N/A
 QID#: 28,628,491

Correctly answered feedback

No, P is flexible so the structure swing will not be firm and will collapse / bend / unable to stand upright when sitting on it.

Incorrectly answered feedback

No, P is flexible so the structure swing will not be firm and will collapse / bend / unable to stand upright when sitting on it.

[Answers](#) |
 [Edit](#) |
 [Duplicate](#) |
 [Used In](#) |
 [Reorder](#)

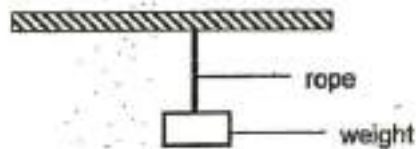
[Remove From Test](#)

Question 64

Primary 5 Science » Primary 5 Science (Term 2)

2 pts

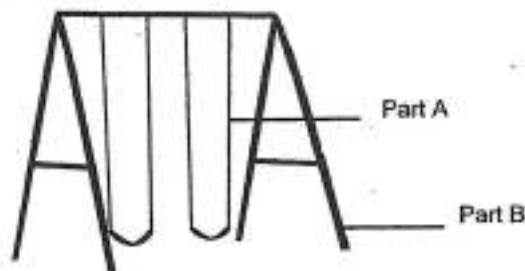
Mrs Lee tested the strength of three types of ropes, X, Y and Z, by hanging weights onto each of them. She added the weights hung onto the rope one by one until the rope started to break.



The maximum weight that the ropes could hold is shown in the table below.

Ropes	X	Y	Z
Maximum weight the rope can hold before it starts to break (kg)	13	100	80

Mrs Lee wanted to make a pair of swings and placed them in her garden for her children of mass 20 kg and 14 kg respectively.



Which rope X, Y or Z should Mrs Lee choose to make part A of her swings?
 Explain your answer clearly. (2 marks)

Accepted answers:

- ✓ Rope Y.
- ✓ rope Y
- ✓ Y

Question Type: Free Text
Date Added: Thu 5th Aug 2021
Last Modified: N/A
QID#: 28,628,507

Correctly answered feedback

Rope Y. It is the strongest and it can hold the masses/weight of her two children.

Incorrectly answered feedback

Rope Y. It is the strongest and it can hold the masses/weight of her two children.

[Answers](#) | [Edit](#) | [Duplicate](#) | [Used In](#) | [Reorder](#)

[Remove From Test](#)

www.classmarker.com